

**The Changing Face of the United States and California and Government as a
Necessary Good**

New Rules for a New Ballgame

**By: Ron Crouch, Director
Kentucky State Data Center
University of Louisville
Homepage: <http://ksdc.louisville.edu>
e-mail: ron.crouch@louisville.edu
phone: (502) 852-7990
cell: (502) 640-5873**

- (1) The United States is experiencing a major demographic revolution.**
- (2) Diversity by race and age are both critical issues.**
- (3) The “middle-aging”, not the aging, of our population is now taking place. The aging of our population is a decade or more off.**
- (4) Major changes are taking place in our households and families.**
- (5) There are major regional differences taking place across the United States.**
- (6) Our economy is changing and we are not prepared for the new knowledge economy.**
- (7) Bubba is in trouble whether he is Bubba White, Joe Black or Jose Brown.**
- (8) Births to unmarried mothers and children at risk are major challenges.**
- (9) The costs of an aging society are “unsustainable” and we need to rethink the concept of “old”.**
- (10) We have a “sick care” system masquerading as a “health care” system.**

Projected Percentage Change in Population 2000 to 2030

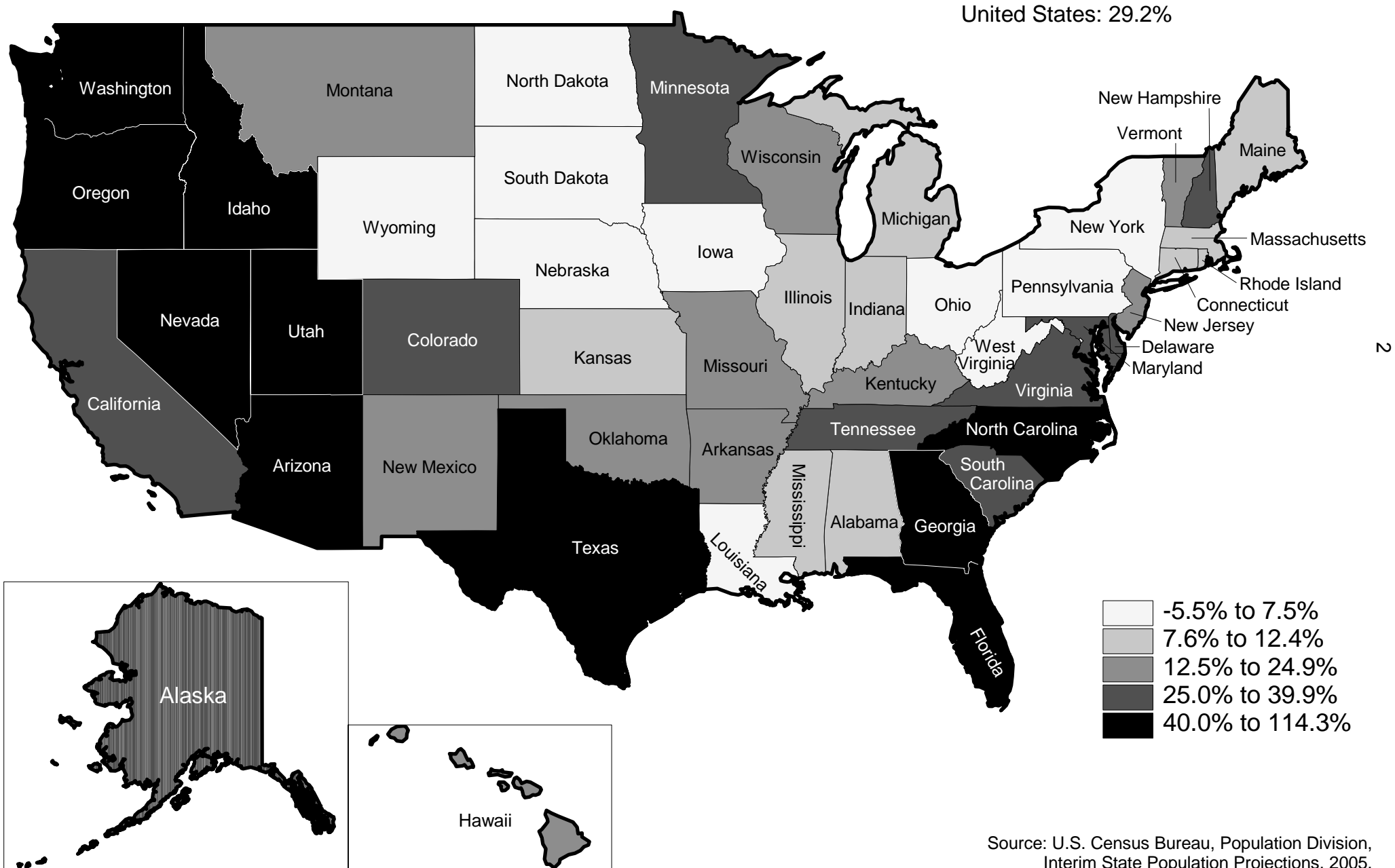


Table 2: Population by Race/Ethnicity - Number and Percent Change between 1990 and 2000

	1990 - 2000 Change								% Two+ Races 2000, Not- Hispanic*
	White, Non-Hispanic		Black, Non-Hispanic		Hispanic		Asian and Pacific Islander, Non-Hispanic*		
	#	%	#	%	#	%	#	%	
United States	6,424,478	3.4%	4,731,544	16.2%	12,951,759	57.9%	3,637,449	52.2%	1.6%
Northeast	-1,039,561	-2.6%	575,197	11.0%	1,499,698	39.9%	833,098	64.5%	1.5%
Connecticut	-115,339	-4.2%	34,731	13.3%	107,207	50.3%	33,869	69.0%	1.5%
Maine	26,940	2.2%	1,503	30.4%	2,531	37.1%	2,907	44.7%	0.9%
Massachusetts	-81,933	-1.6%	43,865	16.0%	141,180	49.1%	99,216	70.7%	1.7%
New Hampshire	95,768	8.9%	1,605	23.8%	9,156	80.8%	6,997	76.1%	0.9%
New Jersey	-161,757	-2.8%	111,326	11.3%	377,330	51.0%	216,114	81.8%	1.6%
New York	-699,208	-5.6%	243,497	9.5%	653,557	29.5%	377,468	56.6%	1.9%
Pennsylvania	-99,603	-1.0%	129,978	12.1%	161,826	69.7%	88,035	65.7%	0.9%
Rhode Island	-37,676	-4.2%	7,639	22.3%	45,068	98.5%	6,343	36.1%	2.0%
Vermont	33,247	6.0%	1,053	56.4%	1,843	50.3%	2,149	68.0%	1.1%
Midwest	1,210,861	2.4%	772,705	13.6%	1,398,023	81.0%	468,432	62.7%	1.2%
Illinois	-126,068	-1.5%	182,449	10.9%	625,816	69.2%	149,458	54.2%	1.2%
Indiana	254,131	5.1%	76,850	17.9%	115,748	117.2%	23,865	65.2%	1.0%
Iowa	46,504	1.7%	13,251	27.9%	49,826	152.6%	12,577	50.5%	0.9%
Kansas	43,473	2.0%	10,646	7.6%	94,582	101.0%	17,043	55.3%	1.6%
Michigan	156,740	2.0%	119,303	9.3%	122,281	60.7%	75,851	74.0%	1.6%
Minnesota	235,877	5.8%	75,773	81.4%	89,498	166.1%	68,473	89.8%	1.4%
Missouri	238,009	5.4%	80,140	14.7%	56,890	92.2%	24,780	61.8%	1.3%
Nebraska	34,399	2.4%	10,826	19.1%	57,456	155.4%	10,469	87.1%	1.0%
North Dakota	-12,443	-2.1%	310	9.0%	3,121	66.9%	473	14.1%	1.0%
Ohio	93,489	1.0%	143,222	12.5%	77,427	55.4%	45,709	51.2%	1.2%
South Dakota	29,797	4.7%	1,387	43.7%	5,651	107.6%	1,587	52.7%	1.2%
Wisconsin	216,953	4.9%	58,548	24.2%	99,727	107.0%	38,147	73.0%	0.9%
South	4,568,592	7.4%	3,112,148	19.9%	4,819,675	71.2%	874,693	81.1%	1.2%
Alabama	165,652	5.6%	132,363	13.0%	51,201	207.9%	11,129	52.5%	0.9%
Arkansas	167,053	8.6%	43,853	11.8%	66,990	337.0%	9,511	78.3%	1.1%
Delaware	39,881	7.6%	37,424	33.7%	21,457	135.6%	7,565	85.4%	1.3%
District of Columbia	-6,953	-4.2%	-55,125	-13.9%	12,243	37.4%	4,672	43.5%	1.7%
Florida	983,183	10.4%	563,165	33.1%	1,108,572	70.4%	124,552	85.2%	1.5%
Georgia	585,236	12.9%	594,300	34.2%	326,305	299.6%	102,012	138.4%	1.1%
Kentucky	229,991	6.8%	32,279	12.4%	37,955	172.6%	13,683	79.5%	0.9%
Louisiana	18,369	0.7%	151,920	11.8%	14,694	15.8%	16,368	41.6%	0.9%
Maryland	-39,562	-1.2%	286,912	24.4%	102,814	82.2%	75,927	55.6%	1.5%
Mississippi	103,710	6.4%	116,582	12.8%	23,638	148.4%	6,534	52.1%	0.6%
North Carolina	676,028	13.6%	274,159	18.9%	302,237	393.9%	65,849	130.2%	1.0%
Oklahoma	8,780	0.3%	26,519	11.5%	93,144	108.1%	16,442	50.8%	4.0%
South Carolina	262,235	11.0%	142,539	13.8%	64,525	211.2%	15,855	74.4%	0.8%
Tennessee	478,299	11.9%	153,279	19.8%	91,097	278.2%	27,324	88.3%	1.0%
Texas	641,633	6.2%	387,895	19.6%	2,329,761	53.7%	264,573	87.1%	1.1%
Virginia	263,987	5.6%	223,245	19.4%	169,252	105.6%	110,196	71.5%	1.6%
West Virginia	-8,930	-0.5%	839	1.5%	3,790	44.6%	2,501	34.5%	0.8%
West	1,684,586	4.8%	271,494	10.1%	5,234,363	51.8%	1,461,226	37.9%	2.5%
Alaska	17,066	4.2%	-726	-3.3%	8,049	45.2%	9,748	52.0%	4.8%
Arizona	648,073	24.7%	45,132	43.1%	607,279	88.2%	44,829	87.0%	1.5%
California	-1,212,336	-7.1%	89,480	4.3%	3,278,618	42.6%	1,076,306	39.7%	2.6%
Colorado	543,935	20.5%	30,386	23.7%	311,299	73.4%	41,487	73.1%	1.7%
Hawaii	-70,553	-20.3%	-5,087	-19.6%	6,309	7.8%	8,220	1.3%	13.8%
Idaho	210,630	22.7%	1,678	52.3%	48,763	92.1%	4,031	44.5%	1.4%
Montana	73,945	10.1%	292	13.0%	5,907	48.5%	956	23.2%	1.5%
Nevada	356,644	37.7%	55,006	71.9%	269,551	216.6%	62,773	174.9%	2.3%
New Mexico	49,331	6.5%	3,012	10.9%	186,162	32.1%	6,910	54.9%	1.4%
Oregon	277,884	10.8%	8,343	18.5%	162,607	144.3%	42,230	62.6%	2.4%
Utah	333,011	21.2%	5,269	48.5%	116,962	138.3%	19,557	60.2%	1.4%
Washington	430,868	10.2%	38,631	26.5%	226,939	105.8%	143,821	70.6%	2.9%
Wyoming	26,088	6.3%	78	2.3%	5,918	23.0%	358	13.7%	1.2%

Source: US Census Bureau, 1990 and 2000 decennial censuses

Note: In 2000, persons were able to check two or more races, the comparison above includes those marking only one race in 2000, the last column shows the percent that marked two or more races by state.

* Two or more races excludes persons listing two races that chose Asian AND Native Hawaiian and Other Pacific Islander. They have been included in the 2000 data for Asian and Pacific Islander, Non-Hispanic.

Table 4: Live births by Hispanic origin of mother and by race for mothers of non-Hispanic origin: states, 2005

State	All origins	Origin of Mother									Not stated
		Hispanic						Non-Hispanic			
		Total	Mexican	Puerto Rican	Cuban	Central and South American	Other and unknown Hispanic	Total*	White	Black	
United States	4,138,349	985,505	693,197	63,340	16,064	151,201	61,703	3,123,005	2,279,768	583,759	29,839
Alabama	60,453	4,020	2,957	102	21	596	344	56,382	37,302	18,057	51
Alaska	10,459	779	360	68	11	54	286	9,584	5,947	374	96
Arizona	96,199	42,852	40,069	324	66	1019	1,374	51,513	40,065	3,019	1,834
Arkansas	39,208	4,038	3,323	49	12	604	50	35,019	26,717	7,406	151
California	548,882	282,842	246,526	2,118	755	27,675	5,768	258,702	159,723	30,520	7,338
Colorado	68,944	21,785	17,469	291	72	852	3,101	47,153	41,454	2,959	6
Connecticut	41,718	8,004	1035	4,364	79	2,299	227	33,647	26,369	4,872	67
Delaware	11,643	1,652	1002	256	6	379	9	9,886	6,479	2,875	105
District of Columbia	7,971	1111	140	13	1	902	55	6,835	2,062	4,604	25
Florida	226,240	63,756	16,882	10,985	11,409	23,341	1,139	161,815	106,530	48,266	669
Georgia	142,200	21,891	16,981	617	140	3,981	172	118,381	68,123	45,327	1,928
Hawaii	17,924	2,789	534	754	22	131	1,348	15,091	4,194	409	44
Idaho	23,062	3,488	2,981	25	8	92	382	19,455	18,627	120	119
Illinois	179,020	43,441	36,942	2,629	175	1,759	1,936	135,473	95,694	30,411	106
Indiana	87,193	8,039	6,992	325	19	625	78	78,816	67,491	9,796	338
Iowa	39,311	3,115	2,486	63	8	466	92	36,081	33,452	1,479	115
Kansas	39,888	6,121	4,698	99	19	438	867	33,608	29,296	2,819	159
Kentucky	56,444	2,509	1,741	133	100	223	312	53,901	48,209	4,841	34
Louisiana	60,937	1,897	883	120	77	472	345	58,972	33,656	23,964	68
Maine	14,112	181	38	31	6	30	76	13,908	13,315	256	23
Maryland	74,980	8,681	1,961	423	57	5,902	338	66,150	37,072	24,321	149
Massachusetts	76,865	10,125	534	4,439	63	4,859	230	66,252	53,922	6,754	488
Michigan	127,706	8,611	6,932	470	94	615	500	115,124	88,214	22,133	3,971
Minnesota	70,919	5,509	4,087	100	25	875	422	64,387	52,967	5,795	1023
Mississippi	42,395	1170	742	30	10	87	301	41,180	21,859	18,633	45
Missouri	78,618	4,271	3,231	147	51	318	524	74,246	60,650	11,479	101
Montana	11,583	396	197	14	5	27	153	10,908	9,281	58	279
Nebraska	26,145	3,854	2,911	44	11	554	334	22,284	19,751	1,523	7
Nevada	37,268	14,090	11,777	267	199	1,393	454	22,645	16,506	2,998	533
New Hampshire	14,420	522	129	136	17	166	74	13,674	12,908	187	224
New Jersey	113,776	27,959	6,479	6,620	803	13,855	202	85,681	58,014	16,730	136
New Mexico	28,835	15,823	7,800	81	47	133	7,762	13,005	8,480	482	7
New York	246,351	57,419	11,115	14,251	500	27,099	4,454	188,313	125,158	41,901	619
North Carolina	123,096	19,519	14,524	843	138	3,847	167	103,451	70,288	28,195	126
North Dakota	8,390	179	100	9	1	11	58	7,910	6,731	122	301
Ohio	148,388	6,070	3,270	1,143	81	941	635	141,092	114,997	22,566	1226
Oklahoma	51,801	6,275	5,722	122	14	367	50	45,359	33,955	4,718	167
Oregon	45,922	9,165	8,404	106	54	404	197	36,515	32,349	958	242
Pennsylvania	145,383	12,208	2,751	6,208	173	1,880	1,196	131,825	106,486	19,816	1,350
Rhode Island	12,697	2,559	196	694	26	1,576	67	8,437	6,616	1,149	1,701
South Carolina	57,711	4,990	3,529	295	46	815	305	52,608	32,818	18,696	113
South Dakota	11,462	392	249	25	2	72	44	11,054	8,925	143	16
Tennessee	81,747	7,000	4,720	266	63	1084	867	74,592	56,488	16,496	155
Texas	385,915	191,445	160,503	1,402	346	8,888	20,306	193,616	137,524	42,152	854
Utah	51,556	7,566	5,749	109	15	669	1024	43,696	41,202	435	294
Vermont	6,295	72	20	18	1	18	15	6,159	5,967	76	64
Virginia	104,555	13,058	3,521	695	88	7,798	956	91,337	62,177	22,163	160
Washington	82,703	15,013	12,217	318	81	677	1,720	65,583	53,733	3,239	2,107
West Virginia	20,836	174	78	13	3	34	46	20,608	19,723	696	54
Wisconsin	70,984	6,252	4,957	675	39	287	294	64,703	54,342	6,719	29
Wyoming	7,239	828	753	11	5	12	47	6,389	5,960	52	22

* Includes races other than white and black.

Source: National Vital Statistics Reports, Vol. 56, No. 6, December 5, 2007, Table 13.

Notes: Race and Hispanic origin are reported separately on birth certificates. Race categories are consistent with the 1977 Office of Management and Budget standards. Nineteen states reported multiple-race data in 2005. The multiple-race data for these States were bridged to the single-race categories of the 1977 Office of Management and Budget standards for comparability with other States; see "Technical Notes." In this table Hispanic women are classified only by place of origin; non-Hispanic women are classified by race; see "Technical Notes." Data for Vermont are based on an incomplete file of records; the total number of births is underreported by about 3 percent. Information based on the complete file of Vermont resident births is available from <http://www.cdc.gov/nchs/about/major/dvs/2005VTupdate.htm>

Table 17: Cumulative Estimates of the Components of Population Change for the United States and States: April 1, 2000 to July 1, 2007

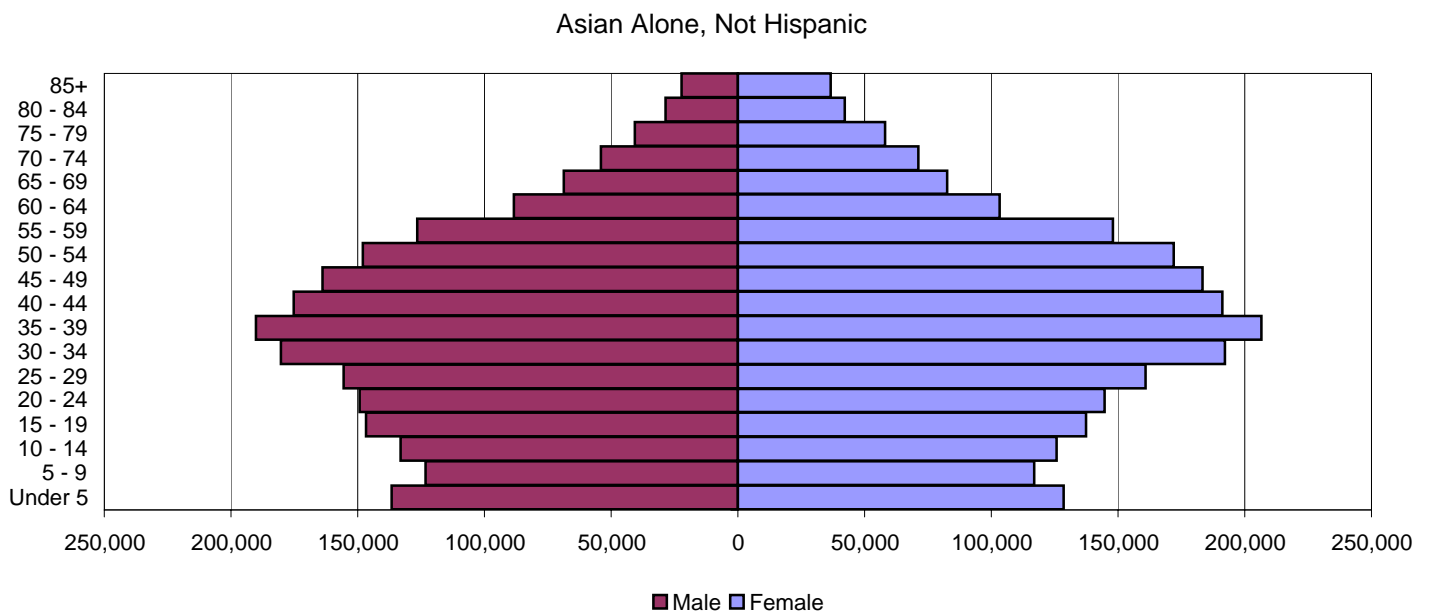
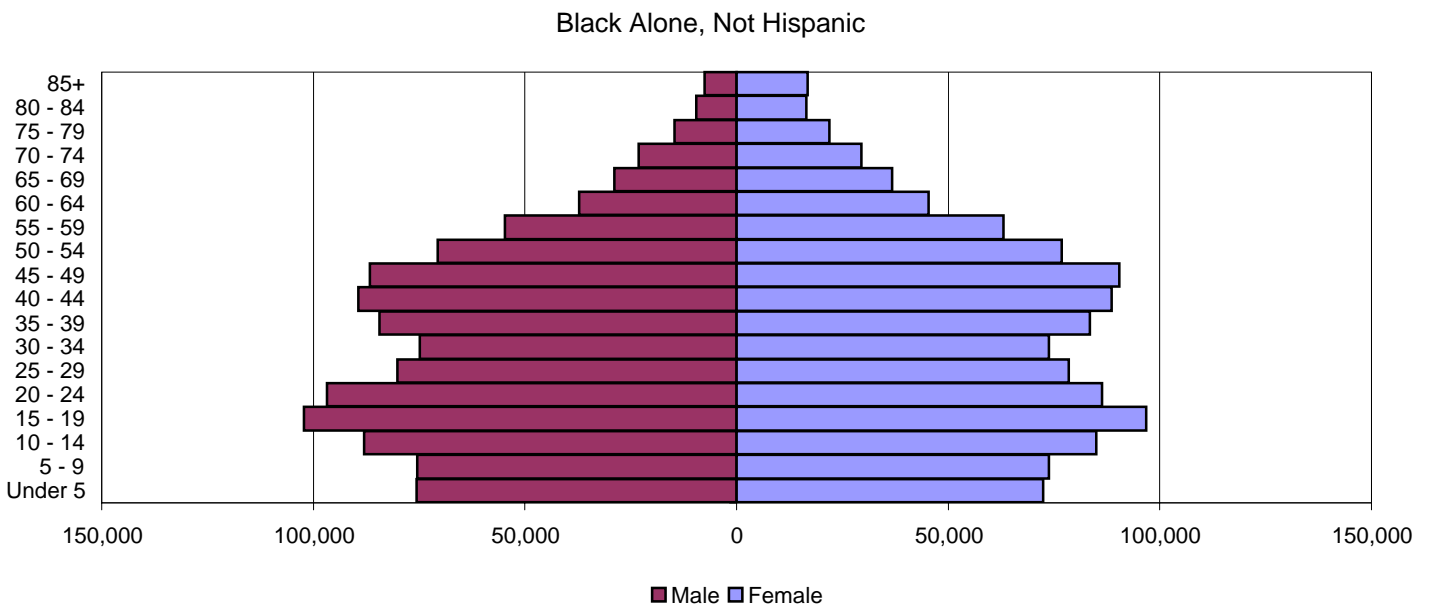
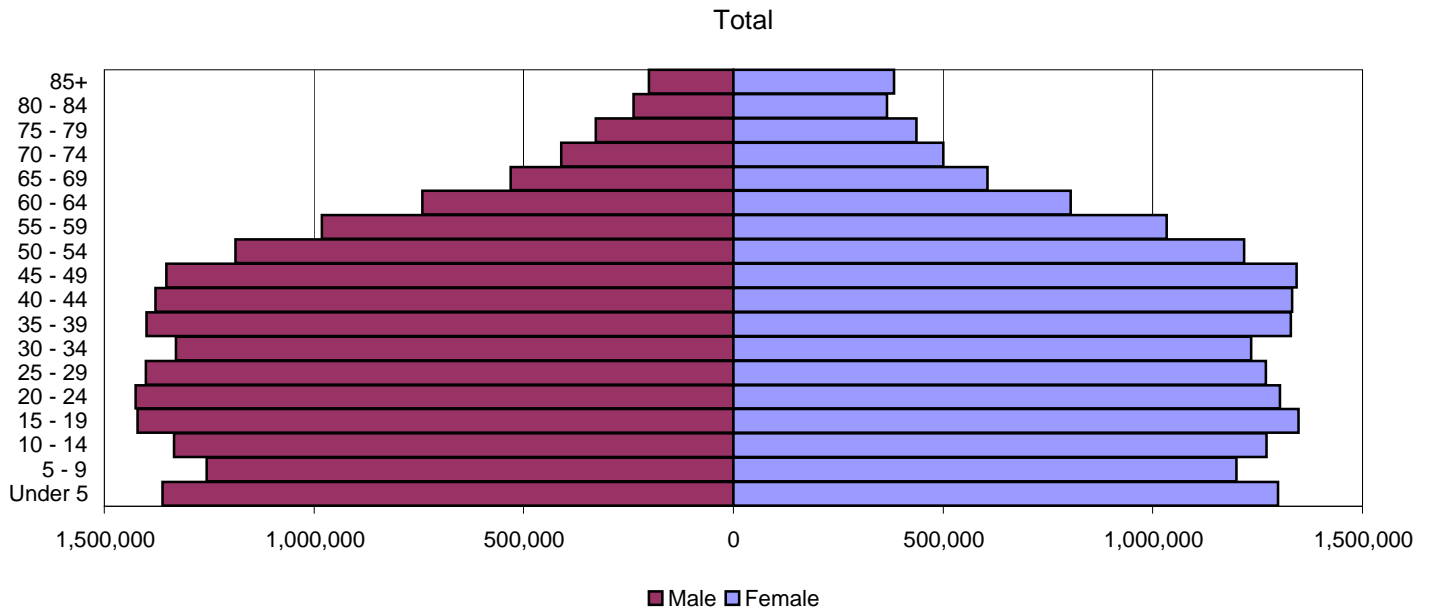
Geographic Area	Total Population Change*	Natural Increase			Net Migration		
		Total	Births	Deaths	Total	Net International Migration	Net Internal Migration
United States	20,196,555	12,212,284	29,809,472	17,597,188	7,984,271	7,984,271	-
Northeast	1,085,844	1,446,362	4,919,082	3,472,720	-500,980	1,717,074	-2,218,054
Connecticut	96,707	92,010	306,540	214,530	19,631	97,695	-78,064
Maine	42,286	10,644	100,801	90,157	36,665	5,275	31,390
Massachusetts	100,650	172,254	574,867	402,613	-99,252	206,438	-305,690
New Hampshire	80,042	35,461	107,694	72,233	49,610	13,928	35,682
New Jersey	271,573	291,260	819,551	528,291	-640	376,519	-377,159
New York	320,908	698,971	1,820,204	1,121,233	-589,175	859,994	-1,449,169
Pennsylvania	151,738	114,795	1,050,424	935,629	83,889	128,305	-44,416
Rhode Island	9,513	20,554	91,870	71,316	-6,375	23,874	-30,249
Vermont	12,427	10,413	47,131	36,718	4,667	5,046	-379
Midwest	1,993,595	2,314,328	6,470,373	4,156,045	-342,759	1,057,420	-1,400,179
Illinois	432,901	564,091	1,324,293	760,202	-131,259	420,052	-551,311
Indiana	264,768	229,514	631,323	401,809	53,405	69,836	-16,431
Iowa	61,664	81,489	280,703	199,214	-14,031	36,217	-50,248
Kansas	87,173	109,842	286,874	177,032	-21,001	46,314	-67,315
Michigan	133,340	319,389	948,153	628,764	-204,072	155,686	-359,758
Minnesota	278,129	238,111	509,246	271,135	54,639	89,636	-34,997
Missouri	281,732	168,856	563,796	394,940	92,888	51,809	41,079
Nebraska	63,306	77,995	187,564	109,569	-9,319	27,398	-36,717
North Dakota	-2,485	16,608	58,630	42,022	-16,347	3,184	-19,531
Ohio	113,772	302,012	1,088,880	786,868	-207,387	94,461	-301,848
South Dakota	41,370	31,062	80,804	49,742	6,977	4,461	2,516
Wisconsin	237,925	175,359	510,107	334,748	52,748	58,366	-5,618
South	10,218,933	4,446,011	11,047,213	6,601,202	5,778,912	2,551,575	3,227,337
Alabama	180,500	102,880	437,898	335,018	90,493	30,650	59,843
Arkansas	161,399	78,302	279,228	200,926	90,101	27,119	62,982
Delaware	81,164	31,157	82,506	51,349	53,497	13,924	39,573
District of Columbia	16,233	15,596	56,509	40,913	-17,648	25,783	-43,431
Florida	2,268,419	360,972	1,578,928	1,217,956	1,960,446	674,271	1,286,175
Georgia	1,357,934	521,982	1,001,287	479,305	725,733	240,814	484,919
Kentucky	199,193	110,877	401,673	290,796	94,672	30,881	63,791
Louisiana	-175,754	156,595	460,782	304,187	-312,739	22,477	-335,216
Maryland	321,836	227,910	543,744	315,834	81,385	135,800	-54,415
Mississippi	74,129	106,023	311,575	205,552	-19,610	10,429	-30,039
North Carolina	1,014,541	352,899	880,162	527,263	679,832	188,925	490,907
Oklahoma	166,662	120,981	372,792	251,811	54,047	42,146	11,901
South Carolina	395,893	132,891	409,724	276,833	269,092	40,959	228,133
Tennessee	467,457	168,757	579,255	410,498	278,058	60,929	217,129
Texas	3,052,581	1,635,015	2,759,655	1,124,640	1,424,673	842,595	582,078
Virginia	633,061	324,115	740,719	416,604	314,832	159,627	155,205
West Virginia	3,685	-941	150,776	151,717	12,048	4,246	7,802
West	6,898,183	4,005,583	7,372,804	3,367,221	3,049,098	2,658,202	390,896
Alaska	56,547	53,166	74,878	21,712	-889	4,236	-5,125
Arizona	1,208,140	353,002	671,105	318,103	869,368	214,014	655,354
California	2,681,560	2,232,397	3,944,853	1,712,456	583,434	1,807,426	-1,223,992
Colorado	559,496	291,317	499,880	208,563	274,296	141,730	132,566
Hawaii	71,851	66,781	130,786	64,005	10,308	30,891	-20,583
Idaho	205,446	88,483	161,485	73,002	117,935	17,520	100,415
Montana	55,666	23,847	83,417	59,570	32,545	2,099	30,446
Nevada	567,125	124,490	251,500	127,010	449,261	84,578	364,683
New Mexico	150,869	99,615	204,913	105,298	58,745	33,790	24,955
Oregon	326,019	113,876	336,646	222,770	228,005	91,629	136,376
Utah	412,132	272,134	367,188	95,054	93,987	63,278	30,709
Washington	574,284	267,052	597,061	330,009	320,442	164,951	155,491
Wyoming	29,048	19,423	49,092	29,669	11,661	2,060	9,601

*Total population change includes residual - see "State and County Terms & Definitions"

Note: The April 1, 2000 Population Estimates base reflects changes to the Census 2000 population from the Count Question Resolution program and geographic program revisions. Dash (-) represents zero or rounds to zero. (X) Not applicable

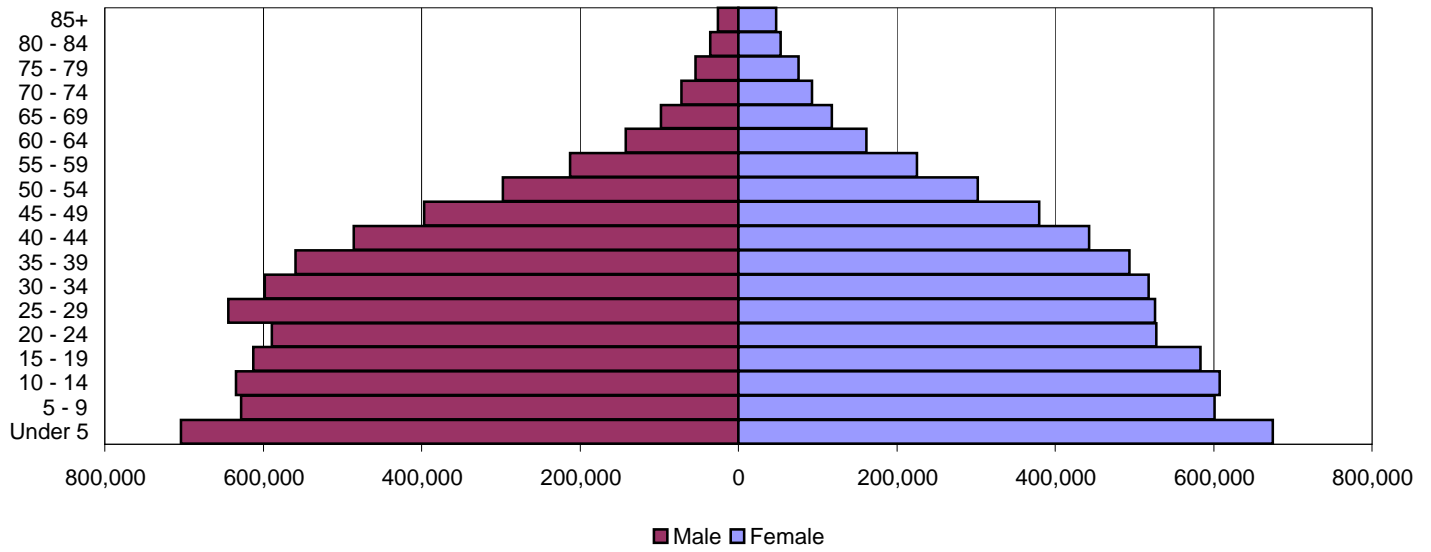
Source: Population Division, U.S. Census Bureau, (NST-EST2007-04), Table 14, Release Date: December 27, 2007

California 2007 Population Pyramids

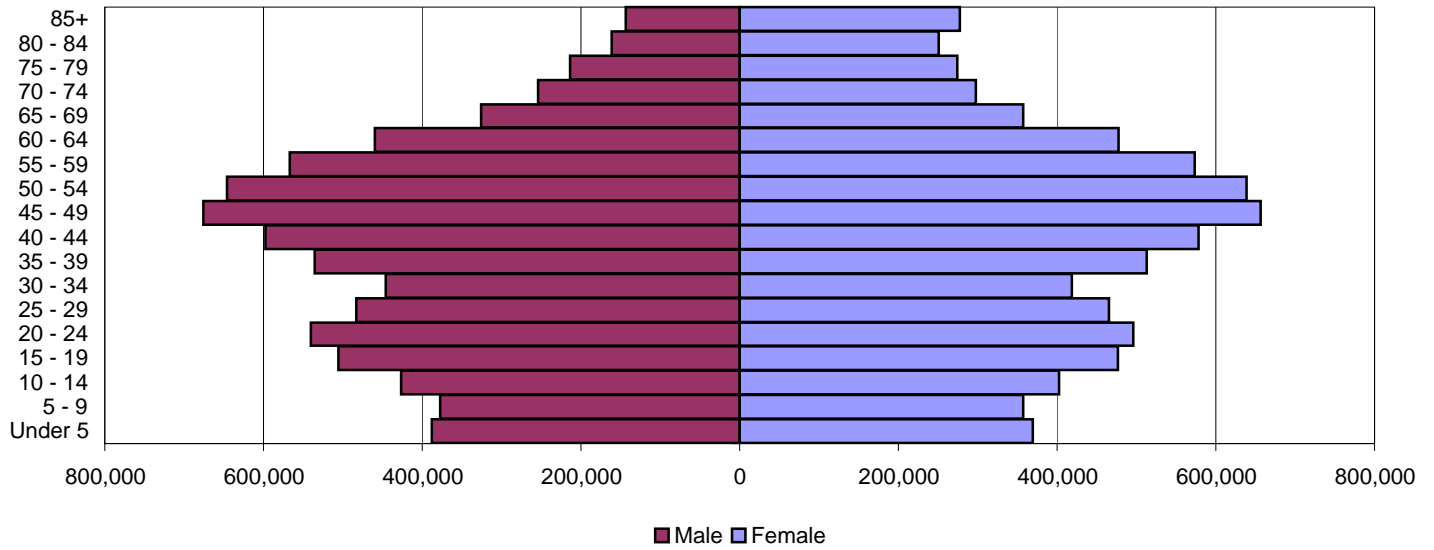


California 2007 Population Pyramids

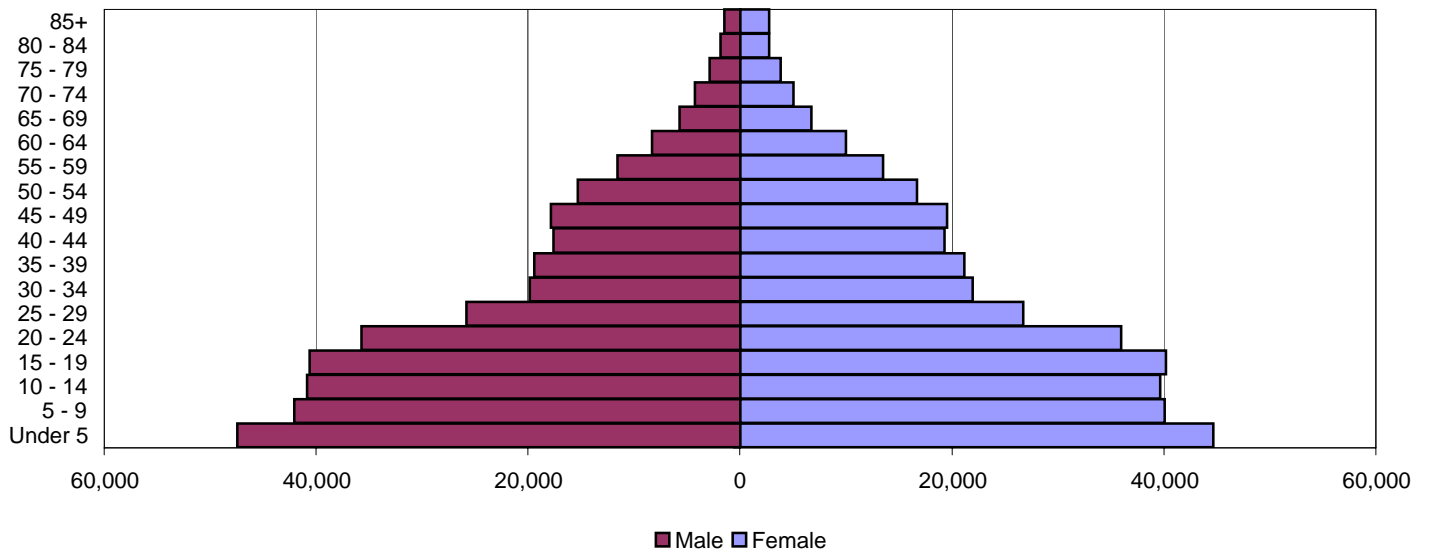
Hispanic or Latino



White Alone, Not Hispanic or Latino



Two or More Races, Not Hispanic



Population by Age, Race and Hispanic Origin; California: 2007

	Total Population	Black; Not Hispanic*	% of Total	Asian; Not Hispanic*	% of Total	Two or More Races; Not Hispanic*	% of Total	Hispanic	% of Total	White; Not Hispanic	% of Total
Total Population	36,553,215	2,235,597	6.1%	4,432,593	12.1%	729,010	2.0%	13,220,891	36.2%	15,623,642	42.7%
Under 5 years	2,660,386	148,058	5.6%	265,235	10.0%	92,115	3.5%	1,378,561	51.8%	757,602	28.5%
5 to 9 years	2,454,342	149,268	6.1%	240,184	9.8%	82,106	3.3%	1,229,142	50.1%	735,100	30.0%
10 to 14 years	2,605,787	173,027	6.6%	258,915	9.9%	80,516	3.1%	1,241,986	47.7%	829,184	31.8%
15 to 19 years	2,767,231	199,012	7.2%	283,946	10.3%	80,766	2.9%	1,195,530	43.2%	982,072	35.5%
20 to 24 years	2,728,199	183,070	6.7%	293,958	10.8%	71,689	2.6%	1,116,420	40.9%	1,036,462	38.0%
25 to 29 years	2,670,756	158,644	5.9%	316,457	11.8%	52,544	2.0%	1,170,497	43.8%	948,193	35.5%
30 to 34 years	2,564,461	148,615	5.8%	372,357	14.5%	41,766	1.6%	1,115,964	43.5%	863,806	33.7%
35 to 39 years	2,728,192	167,884	6.2%	396,897	14.5%	40,587	1.5%	1,052,272	38.6%	1,047,692	38.4%
40 to 44 years	2,709,381	177,950	6.6%	366,528	13.5%	36,887	1.4%	928,321	34.3%	1,175,400	43.4%
45 to 49 years	2,694,966	177,131	6.6%	347,294	12.9%	37,387	1.4%	776,435	28.8%	1,331,923	49.4%
50 to 54 years	2,405,406	147,400	6.1%	320,124	13.3%	32,038	1.3%	599,963	24.9%	1,284,081	53.4%
55 to 59 years	2,013,754	117,706	5.8%	274,420	13.6%	25,045	1.2%	438,282	21.8%	1,140,052	56.6%
60 to 64 years	1,546,761	82,608	5.3%	191,580	12.4%	18,314	1.2%	303,521	19.6%	937,126	60.6%
65 to 69 years	1,137,621	65,705	5.8%	151,112	13.3%	12,493	1.1%	216,218	19.0%	682,492	60.0%
70 to 74 years	911,071	52,607	5.8%	125,088	13.7%	9,253	1.0%	165,389	18.2%	551,968	60.6%
75 to 79 years	765,507	36,567	4.8%	98,856	12.9%	6,740	0.9%	130,148	17.0%	488,342	63.8%
80 to 84 years	604,894	26,035	4.3%	70,781	11.7%	4,537	0.8%	88,553	14.6%	411,730	68.1%
85 years and over	584,500	24,310	4.2%	58,861	10.1%	4,227	0.7%	73,689	12.6%	420,417	71.9%
Median age	34.7	32.6		37.0		21.4		26.9		42.8	

* Median age includes persons of Hispanic origin

Source: Census Bureau, 2007 Population Estimates

November 2008

Profile of General Demographic Characteristics for California: 1990, 2000, and Change 1990-2000

	1990	1990%	2000	2000%	Change	
					Number	Percent
Total population	29,760,021	100.0	33,871,648	100.0	4,111,627	13.8%
Under 5 years	2,397,715	8.1	2,486,981	7.3	89,266	3.7%
5 to 9 years	2,223,982	7.5	2,725,880	8.0	501,898	22.6%
10 to 14 years	1,977,343	6.6	2,570,822	7.6	593,479	30.0%
15 to 19 years	2,053,148	6.9	2,450,888	7.2	397,740	19.4%
20 to 24 years	2,510,794	8.4	2,381,288	7.0	-129,506	-5.2%
25 to 34 years	5,686,371	19.1	5,229,062	15.4	-457,309	-8.0%
35 to 44 years	4,639,321	15.6	5,485,341	16.2	846,020	18.2%
45 to 54 years	2,902,569	9.8	4,331,635	12.8	1,429,066	49.2%
55 to 59 years	1,133,907	3.8	1,467,252	4.3	333,345	29.4%
60 to 64 years	1,099,319	3.7	1,146,841	3.4	47,522	4.3%
65 to 74 years	1,857,221	6.2	1,887,823	5.6	30,602	1.6%
75 to 84 years	979,224	3.3	1,282,178	3.8	302,954	30.9%
85 years and over	299,107	1.0	425,657	1.3	126,550	42.3%
Median age (years)	31.4	(X)	33.3	(X)	1.9	6.1%
One race ¹	29,760,021	100.0	32,264,002	95.3	2,503,981	8.4%
White	20,524,327	69.0	20,170,059	59.5	-354,268	-1.7%
Black or African American	2,208,801	7.4	2,263,882	6.7	55,081	2.5%
American Indian and Alaska Native	242,164	0.8	333,346	1.0	91,182	37.7%
Asian	2,735,060	9.2	3,697,513	10.9	962,453	35.2%
Native Hawaiian and Other Pacific Islander	110,599	0.4	116,961	0.3	6,362	5.8%
Some other race	3,939,070	13.2	5,682,241	16.8	1,743,171	44.3%
Two or more races ¹	(X)	(X)	1,607,646	4.7	(NA)	(NA)
Hispanic or Latino (of any race)	7,687,938	25.8	10,966,556	32.4	3,278,618	42.6%
Not Hispanic or Latino	22,072,083	74.2	22,905,092	67.6	833,009	3.8%
White	17,029,126	57.2	15,816,790	46.7	-1,212,336	-7.1%
Total households	10,381,206	100.0	11,502,870	100.0	1,121,664	10.8%
Family households (families)	7,139,394	68.8	7,920,049	68.9	780,655	10.9%
With own children under 18 years	3,544,780	34.1	4,117,036	35.8	572,256	16.1%
Married-couple family	5,469,522	52.7	5,877,084	51.1	407,562	7.5%
With own children under 18 years	2,655,649	25.6	2,989,974	26.0	334,325	12.6%
Female householder, no husband present	1,192,180	11.5	1,448,510	12.6	256,330	21.5%
With own children under 18 years	679,098	6.5	834,716	7.3	155,618	22.9%
Nonfamily households	3,241,812	31.2	3,582,821	31.1	341,009	10.5%
Householder living alone	2,429,867	23.4	2,708,308	23.5	278,441	11.5%
Householder 65 years and over	818,520	7.9	892,207	7.8	73,687	9.0%
Households with individuals under 18 years	3,906,232	37.6	4,569,910	39.7	663,678	17.0%
Households with individuals 65 years and over	2,241,643	21.6	2,570,170	22.3	328,527	14.7%
Average household size	2.79	(X)	2.87	(X)	0.08	2.9%
Average family size	3.32	(X)	3.43	(X)	0.11	3.3%

Selected Social and Economic Characteristics for California: 1990, 2000 and Change 1990-2000

EDUCATIONAL ATTAINMENT	1990	1990%	2000	2000%	Change	
					Number	Percent
Persons 25 years and over	18,695,499	100.0	21,298,900	100.0	2,603,401	13.9%
Less than 9th grade	2,085,905	11.2	2,446,324	11.5	360,419	17.3%
9th to 12th grade, no diploma	2,364,623	12.6	2,496,419	11.7	131,796	5.6%
High school graduate	4,167,897	22.3	4,288,452	20.1	120,555	2.9%
Some college, no degree	4,225,911	22.6	4,879,336	22.9	653,425	15.5%
Associate degree	1,484,489	7.9	1,518,403	7.1	33,914	2.3%
Bachelor's degree	2,858,107	15.3	3,640,157	17.1	782,050	27.4%
Graduate or professional degree	1,508,567	8.1	2,029,809	9.5	521,242	34.6%
Percent high school graduate or higher		76.2		76.8	0.6	0.8%
Percent bachelor's degree or higher		23.4		26.6	3.2	13.7%
White N/H - % high school graduate or higher	10,245,990	85.8	10,211,459	89.8	-34,531	-0.3%
White N/H - % bachelor's degree or higher	3,325,709	27.8	3,841,308	33.8	515,599	15.5%
Black - % high school graduate or higher	960,576	75.6	1,073,459	80.5	112,883	11.8%
Black - % bachelor's degree or higher	188,254	14.8	228,948	17.2	40,694	21.6%
Hispanic - % high school graduate or higher	1,665,848	45.0	2,567,791	46.7	901,943	54.1%
Hispanic - % bachelor's degree or higher	263,051	7.1	425,972	7.7	162,921	61.9%
LABOR FORCE STATUS	1989		1999		Number	Percent
Persons 16 years and over	22,786,281	100.0	25,596,144	100.0	2,809,863	12.3%
In labor force	15,262,900	67.0	15,977,879	62.4	714,979	4.7%
Civilian labor force	14,992,811	65.8	15,829,202	61.8	836,391	5.6%
Employed	13,996,309	61.4	14,718,928	57.5	722,619	5.2%
Unemployed	996,502	4.4	1,110,274	4.3	113,772	11.4%
Armed Forces	270,089	1.2	148,677	0.6	-121,412	-45.0%
Not in labor force	7,523,381	33.0	9,618,265	37.6	2,094,884	27.8%
Males 16 years and over	11,306,576	100.0	12,597,735	100.0	1,291,159	11.4%
In labor force	8,640,866	76.4	8,765,269	69.6	124,403	1.4%
Civilian labor force	8,393,989	74.2	8,633,212	68.5	239,223	2.8%
Employed	7,832,901	69.3	8,045,350	63.9	212,449	2.7%
Unemployed	561,088	5.0	587,862	4.7	26,774	4.8%
Armed Forces	246,877	2.2	132,057	1.0	-114,820	-46.5%
Not in labor force	2,665,710	23.6	3,832,466	30.4	1,166,756	43.8%
Females 16 years and over	11,479,705	100.0	12,998,409	100.0	1,518,704	13.2%
In labor force	6,622,034	57.7	7,212,610	55.5	590,576	8.9%
Civilian labor force	6,598,822	57.5	7,195,990	55.4	597,168	9.0%
Employed	6,163,408	53.7	6,673,578	51.3	510,170	8.3%
Unemployed	435,414	3.8	522,412	4.0	86,998	20.0%
Armed Forces	23,212	0.2	16,620	0.1	-6,592	-28.4%
Not in labor force	4,857,671	42.3	5,785,799	44.5	928,128	19.1%

Profile of General Demographic Characteristics for California: 2007

	2007	Margin of Error	2007 %
Total population	36,553,215	*****	100.0
Under 5 years	2,661,890	+/-3,050	7.3
5 to 9 years	2,443,817	+/-18,890	6.7
10 to 14 years	2,616,346	+/-18,708	7.2
15 to 19 years	2,771,046	+/-6,367	7.6
20 to 24 years	2,728,354	+/-6,488	7.5
25 to 34 years	5,205,540	+/-7,195	14.2
35 to 44 years	5,449,923	+/-6,012	14.9
45 to 54 years	5,114,104	+/-6,046	14.0
55 to 59 years	2,009,760	+/-18,067	5.5
60 to 64 years	1,551,486	+/-17,891	4.2
65 to 74 years	2,048,331	+/-3,600	5.6
75 to 84 years	1,408,128	+/-11,493	3.9
85 years and over	544,490	+/-11,286	1.5
Median age (years)	34.7	+/-0.1	(X)
One race ¹	35,290,829	+/-26,412	96.5
White	22,026,736	+/-61,328	60.3
Black or African American	2,263,363	+/-12,575	6.2
American Indian and Alaska Native	266,051	+/-10,336	0.7
Asian	4,511,407	+/-14,112	12.3
Native Hawaiian and Other Pacific Islander	126,345	+/-4,508	0.3
Some other race	6,096,927	+/-64,388	16.7
Two or more races ¹	1,262,386	+/-26,412	3.5
Hispanic or Latino (of any race)	13,220,888	*****	36.2
Not Hispanic or Latino	23,332,327	*****	63.8
White	15,523,249	+/-8,158	42.5
Total households	12,200,672	+/-20,297	100.0
Family households (families)	8,330,684	+/-27,121	68.3
With own children under 18 years	4,209,889	+/-21,730	34.5
Married-couple family	6,065,746	+/-29,426	49.7
With own children under 18 years	2,989,583	+/-23,276	24.5
Female householder, no husband present	1,563,486	+/-16,956	12.8
With own children under 18 years	889,704	+/-14,765	7.3
Nonfamily households	3,869,988	+/-28,032	31.7
Householder living alone	3,030,693	+/-25,312	24.8
Householder 65 years and over	988,671	+/-13,854	8.1
Households with individuals under 18 years	4,657,557	+/-21,167	38.2
Households with individuals 65 years and over	2,766,411	+/-12,507	22.7
Average household size	2.93	+/-0.01	(X)
Average family size	3.53	+/-0.01	(X)

Note: Data are based on a sample and are subject to sampling variability. The value shown here is the 90 percent margin of error. An '*****' entry in the margin of error column indicates that the estimate is controlled. A statistical test for sampling variability is not appropriate.

Source: US Census Bureau, American Community Survey (ACS) - 2007
November 2008

Selected Social and Economic Characteristics for California: 2007

EDUCATIONAL ATTAINMENT	2007	Margin of Error	2007 %
Persons 25 years and over	23,331,762	+/-6,611	100.0
Less than 9th grade	2,468,068	+/-26,961	10.6
9th to 12th grade, no diploma	2,144,680	+/-27,622	9.2
High school graduate	5,396,253	+/-40,351	23.1
Some college, no degree	4,657,119	+/-36,380	20.0
Associate degree	1,782,118	+/-22,707	7.6
Bachelor's degree	4,425,024	+/-34,647	19.0
Graduate or professional degree	2,458,500	+/-26,148	10.5
Percent high school graduate or higher	80.2%	+/-0.2	80.2
Percent bachelor's degree or higher	29.5%	+/-0.2	29.5
White Alone, N/H - % high school graduate or higher			92.8
White Alone, N/H - % bachelor's degree or higher			38.0
Asian Alone - % high school graduate or higher			85.8
Asian Alone - % bachelor's degree or higher			47.7
Black Alone - % high school graduate or higher			86.3
Black Alone - % bachelor's degree or higher			21.0
Hispanic - % high school graduate or higher			56.1
Hispanic - % bachelor's degree or higher			9.9

LABOR FORCE STATUS

Persons 16 years and over	28,275,226	+/-9,025	100.0
In labor force	18,194,694	+/-42,609	64.3
Civilian labor force	18,057,937	+/-42,137	63.9
Employed	16,859,688	+/-43,115	59.6
Unemployed	1,198,249	+/-19,661	4.2
Armed Forces	136,757	+/-5,413	0.5
Not in labor force	10,080,532	+/-43,137	35.7
Males 16 years and over	14,037,396		100.0
In labor force	10,078,590		71.8
Civilian labor force	9,956,353		70.9
Employed	9,308,488		66.3
Unemployed	647,865		4.6
Armed Forces	122,237		0.9
Not in labor force	3,958,806		28.2
Females 16 years and over	14,237,830	+/-6,946	100.0
In labor force	8,116,104	+/-30,079	57.0
Civilian labor force	8,101,584	+/-30,379	56.9
Employed	7,551,200	+/-30,949	53.0
Unemployed	550,384		3.9
Armed Forces	14,520		0.1
Not in labor force	6,121,726		43.0

Selected Social and Economic Characteristics for California: 2007

INCOME	2007 Margin of Error	
Median household income in the past 12 months (in 2006 inflation-adjusted dollars)		
Total Households	\$59,948	+/-295
Black or African American Alone Householder	\$41,528	+/-869
Asian Alone Householder	\$73,096	+/-1,187
White Alone, Not Hispanic or Latino Householder	\$68,812	+/-487
Hispanic or Latino Householder	\$46,212	+/-414
Per capita income in the past 12 months (in 2006 inflation-adjusted dollars)		
Total	\$28,678	+/-118
Black or African American Alone	\$21,995	+/-381
Asian Alone	\$30,501	+/-359
White Alone, Not Hispanic or Latino	\$40,750	+/-236
Hispanic or Latino	\$15,578	+/-139

Note: Data are based on a sample and are subject to sampling variability. The value shown here is the 90 percent margin of error. An '*****' entry in the margin of error column indicates that the estimate is controlled. A statistical test for sampling variability is not appropriate.

Source: US Census Bureau, American Community Survey (ACS) - 2007
November 2008

Table 14: Projections: Population Change by Age: 2000, 2010, 2020, and 2030

State	2000-2010 Change									
	<18		18-24		25-44		45-64		65+	
	#	%	#	%	#	%	#	%	#	%
US	2,137,699	3.0%	3,337,182	12.3%	-2,272,902	-2.7%	19,059,736	30.8%	5,251,960	15.0%
Northeast	-538,186	-4.1%	606,677	12.8%	-1,430,075	-8.8%	3,019,105	24.8%	533,280	7.2%
CT	-27,680	-3.3%	56,511	20.8%	-103,297	-10.0%	200,953	25.5%	45,438	9.7%
ME	-32,006	-10.6%	9,612	9.3%	-21,861	-5.9%	97,590	30.9%	28,876	15.7%
MA	-16,211	-1.1%	90,856	15.7%	-220,092	-11.1%	397,388	28.0%	48,403	5.6%
NH	-5,398	-1.7%	19,291	18.7%	-9,548	-2.5%	114,576	39.0%	30,853	20.9%
NJ	666	0.0%	102,069	15.1%	-150,867	-5.7%	533,564	27.9%	118,449	10.6%
NY	-269,231	-5.7%	209,159	11.8%	-578,869	-9.9%	902,853	21.3%	203,303	8.3%
PA	-174,626	-6.0%	96,970	8.9%	-314,951	-9.0%	658,970	23.2%	37,070	1.9%
RI	1,451	0.6%	12,834	12.0%	-19,927	-6.4%	69,019	29.9%	4,956	3.3%
VT	-15,151	-10.3%	9,375	16.6%	-10,663	-6.0%	44,192	29.3%	15,932	20.6%
Midwest	-410,161	-2.5%	271,992	4.4%	-1,041,685	-5.5%	3,559,812	25.0%	618,699	7.5%
IL	-48,545	-1.5%	58,874	4.9%	-223,190	-5.9%	609,624	22.9%	100,838	6.7%
IN	21,789	1.4%	5,675	0.9%	-83,921	-4.7%	309,652	23.0%	58,459	7.8%
IA	-22,582	-3.1%	-22,458	-7.5%	-34,623	-4.3%	149,572	23.0%	13,674	3.1%
KS	-13,997	-2.0%	215	0.1%	-40,760	-5.3%	152,508	26.6%	19,086	5.4%
MI	-108,709	-4.2%	81,133	8.7%	-151,475	-5.1%	553,817	24.8%	115,473	9.5%
MN	3,069	0.2%	65,027	13.8%	-5,849	-0.4%	362,747	33.9%	76,163	12.8%
MO	-16,298	-1.1%	37,157	6.9%	-88,014	-5.4%	327,756	26.2%	66,266	8.8%
NE	-3,986	-0.9%	-4,983	-2.9%	-37,352	-7.7%	92,937	25.3%	11,118	4.8%
ND	-18,885	-11.7%	-4,202	-5.7%	-20,396	-11.7%	35,276	25.4%	2,630	2.8%
OH	-143,908	-5.0%	37,402	3.5%	-295,811	-8.9%	546,134	21.2%	79,224	5.3%
SD	-8,497	-4.2%	-5,026	-6.5%	-10,462	-5.1%	49,212	30.8%	6,328	5.9%
WI	-49,612	-3.6%	23,178	4.5%	-49,832	-3.2%	370,577	31.1%	69,440	9.9%
South	2,199,349	8.6%	1,244,379	12.7%	-89,224	-0.3%	7,582,207	34.2%	2,410,083	19.4%
AL	-31,238	-2.8%	-17,278	-3.9%	-106,245	-8.2%	234,900	23.1%	69,091	11.9%
AR	22,287	3.3%	-1,328	-0.5%	-15,815	-2.1%	158,362	26.1%	38,133	10.2%
DE	7,621	3.9%	5,198	6.9%	-8,457	-3.6%	73,134	41.7%	23,246	22.9%
DC	-928	-0.8%	-7,024	-9.7%	-18,476	-9.8%	-6,984	-5.6%	-8,862	-12.7%
FL	439,783	12.1%	348,857	26.2%	66,608	1.5%	1,802,965	49.7%	611,100	21.8%
GA	333,152	15.4%	138,143	16.5%	95,682	3.6%	640,101	36.8%	195,549	24.9%
KY	7,489	0.8%	-1,350	-0.3%	-71,194	-5.9%	235,725	25.4%	52,678	10.4%
LA	-48,297	-4.0%	-9,965	-2.1%	-92,336	-7.1%	228,890	23.7%	65,411	12.7%
MD	50,122	3.7%	154,169	34.2%	-57,321	-3.4%	342,834	28.0%	118,680	19.8%
MS	-15,737	-2.0%	-28,882	-9.3%	-37,547	-4.7%	173,418	28.5%	35,502	10.3%
NC	304,791	15.5%	155,504	19.3%	7,864	0.3%	636,235	35.2%	192,116	19.8%
OK	2,713	0.3%	-7,718	-2.2%	-60,734	-6.2%	167,585	21.8%	39,016	8.6%
SC	26,708	2.6%	32,029	7.9%	-47,272	-4.0%	302,900	32.8%	120,327	24.8%
TN	80,394	5.7%	48,661	8.9%	-66,462	-3.9%	353,264	26.8%	125,712	17.9%
TX	898,649	15.3%	305,579	13.9%	428,143	6.6%	1,649,846	39.2%	514,851	24.8%
VA	141,922	8.2%	155,398	22.9%	-75,480	-3.4%	507,864	31.1%	202,026	25.5%
WV	-20,082	-5.0%	-25,614	-14.9%	-30,182	-6.0%	81,168	17.8%	15,507	5.6%
West	886,697	5.2%	1,214,134	19.2%	288,082	1.5%	4,898,612	36.6%	1,689,898	24.4%
AK	-6,734	-3.5%	24,518	42.8%	-15,673	-7.7%	44,217	31.7%	20,849	58.4%
AZ	321,517	23.5%	142,614	27.7%	180,920	12.0%	607,527	56.8%	254,171	38.1%
CA	247,149	2.7%	771,813	22.9%	-65,425	-0.6%	2,444,899	35.2%	797,050	22.2%
CO	87,788	8.0%	56,880	13.2%	-25,339	-1.8%	309,618	32.5%	101,346	24.4%
HI	20,496	6.9%	26,526	23.1%	-26,999	-7.5%	78,650	28.3%	30,464	19.0%
ID	31,207	8.5%	-1,327	-1.0%	54,565	15.1%	103,393	37.2%	35,500	24.3%
MT	-17,750	-7.7%	-2,523	-2.9%	-4,235	-1.7%	66,899	30.4%	24,012	19.9%
NV	153,286	30.0%	62,287	34.7%	90,378	14.4%	275,631	60.0%	110,692	50.6%
NM	-29,169	-5.7%	14,663	8.3%	-38,996	-7.6%	147,939	36.6%	66,742	31.4%
OR	16,640	2.0%	23,445	7.2%	63,260	6.3%	210,101	25.9%	56,151	12.8%
UT	100,287	14.0%	-9,349	-2.9%	86,418	13.8%	139,912	36.8%	44,576	23.4%
WA	-25,420	-1.7%	108,995	19.5%	-3,769	-0.2%	434,656	32.4%	133,380	20.1%
WY	-12,600	-9.8%	-4,408	-8.8%	-7,023	-5.1%	35,170	29.6%	14,965	25.9%

Educational Attainment - U.S. Residents 25+
by Level and State
2000

High school Graduate		Associate Degree		Bachelor's Degree		Graduate / Professional	
United States	80.4	United States	6.3	United States	24.4	United States	8.9
1 Alaska	88.3	1 North Dakota	9.4	1 Massachusetts	33.2	1 Massachusetts	13.7
2 Minnesota	87.9	2 New Hampshire	8.7	2 Colorado	32.7	2 Maryland	13.4
3 Wyoming	87.9	3 Hawaii	8.1	3 Maryland	31.4	3 Connecticut	13.3
4 Utah	87.7	4 Washington	8.0	4 Connecticut	31.4	4 New York	11.8
5 New Hampshire	87.4	5 Wyoming	8.0	5 New Jersey	29.8	5 Virginia	11.6
6 Montana	87.2	6 Utah	7.9	6 Virginia	29.5	6 Colorado	11.1
7 Washington	87.1	7 Vermont	7.7	7 Vermont	29.4	7 Vermont	11.1
8 Colorado	86.9	8 Minnesota	7.7	8 New Hampshire	28.7	8 New Jersey	11.0
9 Nebraska	86.6	9 Wisconsin	7.5	9 Washington	27.7	9 New Hampshire	10.0
10 Vermont	86.4	10 Iowa	7.4	10 Minnesota	27.4	10 New Mexico	9.8
11 Iowa	86.1	11 Maine	7.3	11 New York	27.4	11 Rhode Island	9.7
12 Kansas	86.0	12 Nebraska	7.3	12 California	26.6	12 Illinois	9.5
13 Maine	85.4	13 Idaho	7.2	13 Hawaii	26.2	13 California	9.5
14 Oregon	85.1	14 Massachusetts	7.2	14 Utah	26.1	14 Delaware	9.4
15 Wisconsin	85.1	15 Alaska	7.2	15 Illinois	26.1	15 Washington	9.3
16 Massachusetts	84.8	16 New York	7.2	16 Kansas	25.8	16 Kansas	8.7
17 Idaho	84.7	17 South Dakota	7.1	17 Rhode Island	25.6	17 Oregon	8.7
18 South Dakota	84.6	18 California	7.1	18 Oregon	25.1	18 Alaska	8.6
19 Hawaii	84.6	19 Florida	7.0	19 Delaware	25.0	19 Hawaii	8.4
20 Connecticut	84.0	20 Michigan	7.0	20 Alaska	24.7	20 Pennsylvania	8.4
21 North Dakota	83.9	21 Colorado	7.0	21 Montana	24.4	21 Arizona	8.4
22 Maryland	83.8	22 Rhode Island	7.0	22 Georgia	24.3	22 Minnesota	8.3
23 Michigan	83.4	23 North Carolina	6.8	23 Nebraska	23.7	23 Georgia	8.3
24 Ohio	83.0	24 Arizona	6.7	24 Arizona	23.5	24 Utah	8.3
25 Delaware	82.6	25 South Carolina	6.7	25 New Mexico	23.5	25 Michigan	8.1
26 Indiana	82.1	26 Oregon	6.6	26 Texas	23.2	26 Florida	8.1
27 New Jersey	82.1	27 Connecticut	6.6	27 Maine	22.9	27 Maine	7.9
28 Pennsylvania	81.9	28 Delaware	6.6	28 North Carolina	22.5	28 Texas	7.6
29 Virginia	81.5	29 Nevada	6.2	29 Wisconsin	22.4	29 Missouri	7.6
30 Illinois	81.4	30 Illinois	6.1	30 Pennsylvania	22.4	30 Ohio	7.4
31 Missouri	81.3	31 Ohio	5.9	31 Florida	22.3	31 Nebraska	7.3
32 Arizona	81.0	32 New Mexico	5.9	32 North Dakota	22.0	32 Indiana	7.2
33 Nevada	80.7	33 Pennsylvania	5.9	33 Wyoming	21.9	33 Montana	7.2
34 Oklahoma	80.6	34 Montana	5.9	34 Michigan	21.8	34 North Carolina	7.2
35 Florida	79.9	35 Kansas	5.8	35 Idaho	21.7	35 Wisconsin	7.2
36 New York	79.1	36 Indiana	5.8	36 Missouri	21.6	36 Wyoming	7.0
37 New Mexico	78.9	37 Mississippi	5.7	37 South Dakota	21.5	37 Kentucky	6.9
38 Georgia	78.6	38 Virginia	5.6	38 Iowa	21.2	38 South Carolina	6.9
39 North Carolina	78.1	39 Oklahoma	5.4	39 Ohio	21.1	39 Alabama	6.9
40 Rhode Island	78.0	40 Alabama	5.4	40 South Carolina	20.4	40 Idaho	6.8
41 California	76.8	41 Maryland	5.3	41 Oklahoma	20.3	41 Oklahoma	6.8
42 South Carolina	76.3	42 New Jersey	5.3	42 Tennessee	19.6	42 Tennessee	6.8
43 Tennessee	75.9	43 Texas	5.2	43 Indiana	19.4	43 Iowa	6.5
44 Texas	75.7	44 Georgia	5.2	44 Alabama	19.0	44 Louisiana	6.5
45 Arkansas	75.3	45 Missouri	5.1	45 Louisiana	18.7	45 Nevada	6.1
46 Alabama	75.3	46 Kentucky	4.9	46 Nevada	18.2	46 South Dakota	6.0
47 West Virginia	75.2	47 Tennessee	4.7	47 Kentucky	17.1	47 West Virginia	5.9
48 Louisiana	74.8	48 West Virginia	4.3	48 Mississippi	16.9	48 Mississippi	5.8
49 Kentucky	74.1	49 Arkansas	4.0	49 Arkansas	16.7	49 Arkansas	5.7
50 Mississippi	72.9	50 Louisiana	3.5	50 West Virginia	14.8	50 North Dakota	5.5

Source: Census 2000, DP-2

Table 20: Educational Attainment - Percent of U.S. Residents 25-34 and 45-64 Completing High School
by State
2000

25-34		45-64		Percentage Point Change	
USA	83.9	USA	83.2	USA	0.7
1 North Dakota	94.8	1 Minnesota	91.8	1 Kentucky	9.0
2 Minnesota	92.4	2 Utah	90.8	2 Mississippi	7.2
3 Hawaii	92.1	3 Nebraska	90.7	3 West Virginia	6.9
4 Vermont	91.9	4 Montana	90.5	4 North Dakota	6.1
5 Montana	91.7	5 Wyoming	90.5	5 Tennessee	5.9
6 New Hampshire	91.6	6 Washington	90.3	6 South Carolina	5.8
7 Wyoming	91.6	7 Colorado	90.1	7 Hawaii	5.1
8 Maine	91.4	8 Alaska	89.9	8 Virginia	4.7
9 Alaska	91.1	9 Iowa	89.8	9 Arkansas	4.7
10 Iowa	91.1	10 Kansas	89.6	10 Alabama	4.0
11 South Dakota	90.9	11 Oregon	89.6	11 Maine	4.0
12 Massachusetts	90.2	12 New Hampshire	89.2	12 Massachusetts	3.9
13 Wisconsin	89.8	13 Wisconsin	89.2	13 North Carolina	3.9
14 Nebraska	89.6	14 South Dakota	88.9	14 Ohio	3.8
15 Pennsylvania	89.0	15 North Dakota	88.7	15 Louisiana	3.7
16 Ohio	89.0	16 Vermont	88.6	16 New York	3.5
17 Connecticut	88.8	17 Idaho	88.3	17 Pennsylvania	3.5
18 Maryland	88.4	18 Maine	87.4	18 Georgia	3.4
19 Michigan	88.2	19 Hawaii	87.0	19 Vermont	3.3
20 Kansas	88.0	20 Connecticut	86.7	20 Rhode Island	2.9
21 Utah	87.8	21 Michigan	86.6	21 Missouri	2.7
22 Missouri	87.4	22 Massachusetts	86.2	22 New Jersey	2.7
23 Washington	87.4	23 Maryland	85.9	23 Maryland	2.5
24 Virginia	87.3	24 Pennsylvania	85.5	24 New Hampshire	2.4
25 Delaware	87.2	25 Ohio	85.2	25 Delaware	2.3
26 New Jersey	87.0	26 Delaware	85.0	26 Indiana	2.2
27 Colorado	86.8	27 Nevada	84.8	27 Connecticut	2.1
28 Indiana	86.8	28 Arizona	84.7	28 South Dakota	2.0
29 Idaho	86.4	29 Missouri	84.7	29 Michigan	1.6
30 Oklahoma	85.1	30 Indiana	84.6	30 Iowa	1.3
31 West Virginia	84.9	31 Illinois	84.3	31 Alaska	1.2
32 Illinois	84.9	32 New Jersey	84.3	32 Montana	1.2
33 Oregon	84.8	33 Oklahoma	84.2	33 Wyoming	1.1
34 Rhode Island	84.8	34 Virginia	82.6	34 Oklahoma	1.0
35 Kentucky	84.2	35 New Mexico	82.4	35 Minnesota	0.7
36 New York	84.1	36 Florida	82.0	36 Florida	0.7
37 North Carolina	84.0	37 Rhode Island	81.8	37 Wisconsin	0.6
38 Tennessee	83.9	38 New York	80.6	38 Illinois	0.6
39 Georgia	83.3	39 California	80.5	39 New Mexico	-0.9
40 Arkansas	83.3	40 North Carolina	80.1	40 Nebraska	-1.0
41 South Carolina	83.2	41 Georgia	79.9	41 Texas	-1.1
42 Florida	82.7	42 Arkansas	78.6	42 Kansas	-1.6
43 Alabama	82.2	43 Texas	78.5	43 Idaho	-1.9
44 New Mexico	81.5	44 Alabama	78.2	44 Washington	-2.9
45 Mississippi	81.2	45 Tennessee	78.0	45 Utah	-3.0
46 Louisiana	81.1	46 West Virginia	78.0	46 Colorado	-3.4
47 Arizona	79.2	47 Louisiana	77.5	47 Oregon	-4.8
48 Nevada	78.3	48 South Carolina	77.4	48 California	-5.4
49 Texas	77.4	49 Kentucky	75.2	49 Arizona	-5.5
50 California	75.2	50 Mississippi	74.0	50 Nevada	-6.5

Source: Census 2000 (SF3, PCT25)

California: The State We're In

Among the key findings for the state of California are:

1. The Achievement Gap

- 10% of low-income 4th graders are proficient in reading, compared to 34% of non-poor students. California ranks 26th in the nation on this measure.
- 11% of African-American 4th graders are proficient in reading, compared to 36% of white students. California ranks 20th out of 42 states that had data available on this measure.
- 9% of Latino 4th graders are proficient in reading, compared to 36% of white students. California ranks 32nd out of 41 states with data available on this measure.

2. Early Childhood Education

- 11% of 3-year-olds participate in state-sponsored pre-kindergarten or the federal Head Start program. California ranks 36th in the nation on this measure.
- 25% of 4-year-olds participate in such programs. California ranks 27th in the nation on this measure.

3. The High-School-to-College Pipeline

- The state's high-school graduation rate is 67%. California ranks 37th in the nation on this measure.
- 32% of high-school graduates are academically ready for college. California ranks 32nd in the nation on this measure.
- 48% of high-school graduates enroll in college the fall after they graduate. California ranks 44th in the nation on this measure.
- 50% of college freshmen earn a bachelor's degree within 6 years. California ranks 29th in the nation on this measure.

4. Accessibility of Higher Education

- 25% of the average family income is required to pay for annual community college expenses after accounting for financial aid. California ranks 36th in the nation on this measure.
- 32% of the average family income is required to pay for annual expenses at a 4-year public university, after accounting for financial aid. California ranks 39th in the nation on this measure.

- 100% of California's grants to college students are need-based. California ranks 1st among the 48 states and the District of Columbia, for which data are available on this measure.

5. Participation in After-School Programs

- 22% of youth go unsupervised after school. California ranks 15th in the nation on this measure.
- 12% participate in after-school programs. California ranks 21st in the nation on this measure.

6. Standards and Student Performance Measurements

- Among 4th graders, 39% of students are proficient on the state reading test, while 21% are proficient on the National Assessment of Educational Progress. With an 18-point gap, California ranks 6th in the nation on the disparity between state and national performance measures for 4th grade reading.
- In math, 45% of 4th graders achieve proficiency on the state math test, compared to 25% who do so on the NAEP. With a 20-point gap, California ranks 11th in the nation on this measure.
- Among 8th graders, 30% of students are proficient on the state reading test, while 22% achieve proficiency on the NAEP. With an 8-point gap, California ranks 5th out of 47 states with data available on this measure.
- In math, 30% of 8th graders achieve proficiency on the state math test, compared to 22% who do so on the NAEP. With an 8-point gap, California ranks 11th out of 47 states with data available.

7. Teachers' Subject-Matter Qualifications

- 27% of middle- and high-school classes in core academic subjects are taught by instructors who lack at least a college minor in their subject. California ranks 33rd in the nation on this measure.
- 27% of middle- and high-school classes in core academic subjects in high-poverty schools are led by teachers without at least a college minor in their subject. California ranks 9th of the 37 states with data available on this measure.



Home About BEA National International **Regional** Industry Glossary FAQs

About Regional • Methodologies • Articles • Release Schedule • Staff Contacts • Email Subscriptions

Go [Advanced](#) | [FAQ](#) | [A-Z Index](#)

[Home](#) > [Regional Economic Accounts](#) > [Local Area Personal Income](#) > CA25N – Total full-time and part-time employment by NAICS industry

CA25N - Total full-time and part-time employment by NAICS industry

Data Table Options



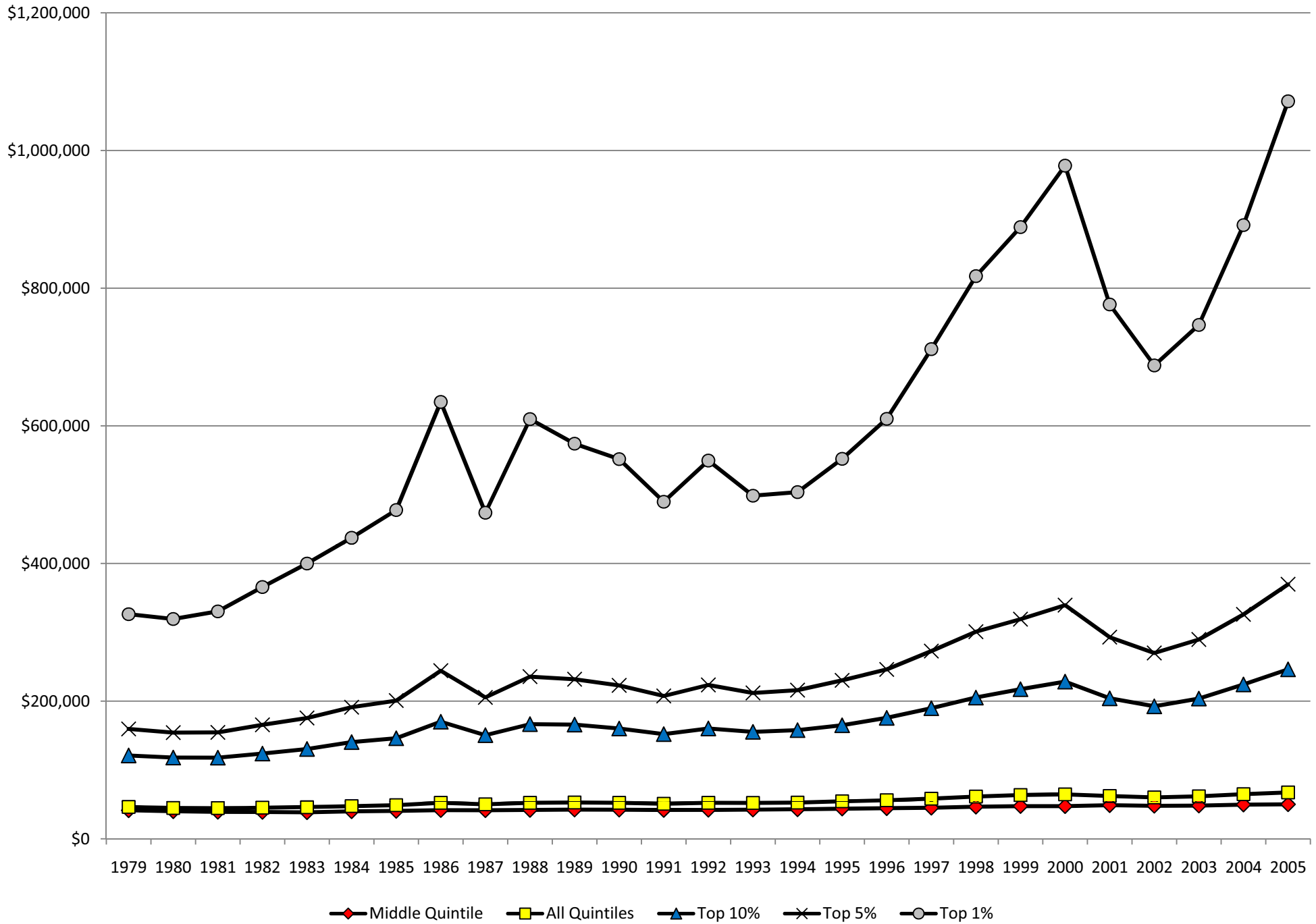
Tools



CA25N Total full-time and part-time employment by NAICS industry California (number of jobs)

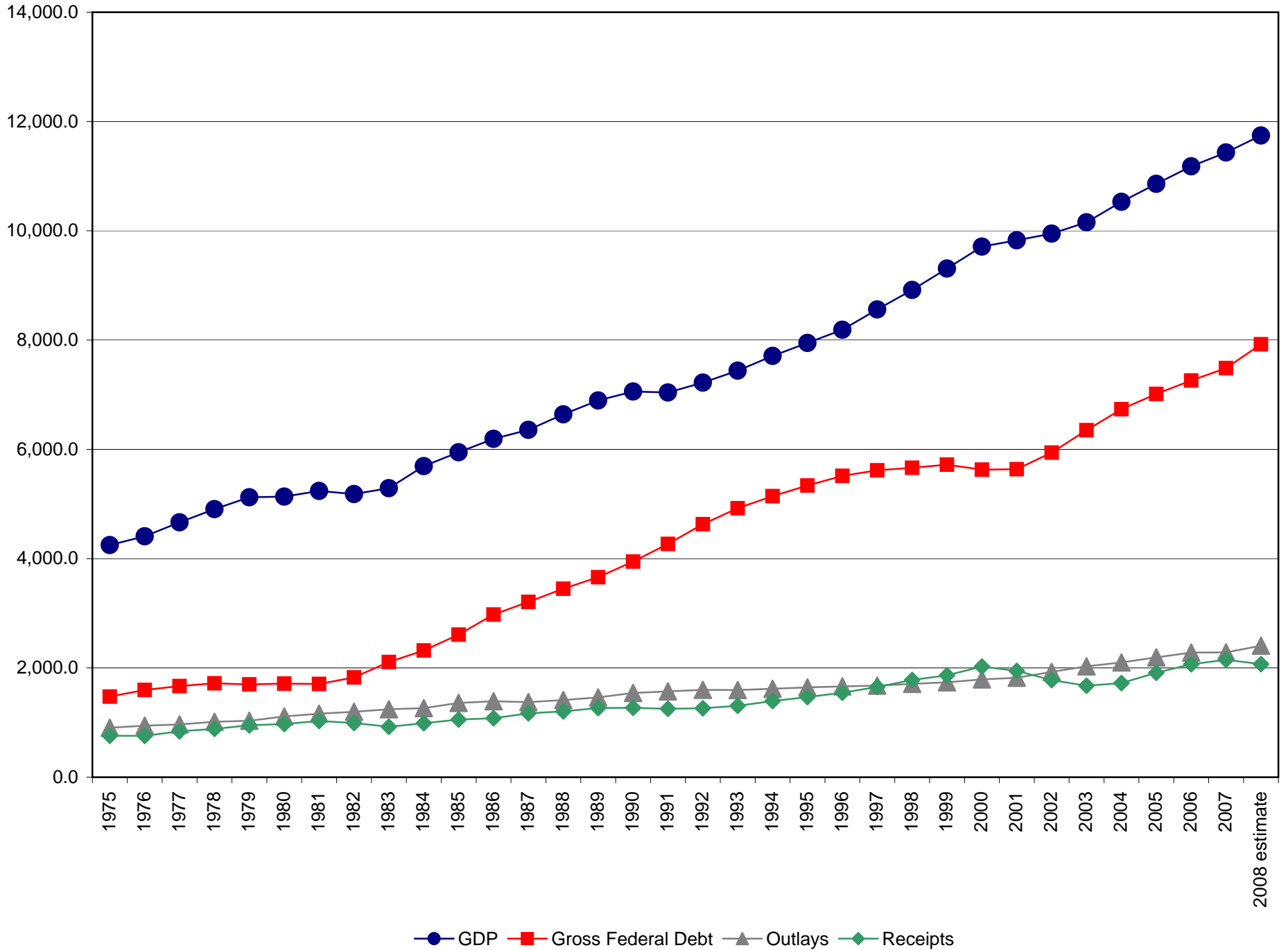
Line		2001	2002	2003	2004	2005	2006
0010	Total employment	19,715,866	19,660,375	19,780,956	19,796,639	20,035,297	20,525,491
0020	Wage and salary employment	15,894,113	15,808,474	15,773,528	15,866,949	16,069,656	16,323,761
0040	Proprietors employment	3,821,753	3,851,901	4,007,428	3,929,690	3,965,641	4,201,730
0050	Farm proprietors employment	84,406	84,374	81,129	79,286	79,641	78,821
0060	Nonfarm proprietors employment v2	3,737,347	3,767,527	3,926,299	3,850,404	3,886,000	4,122,909
0070	Farm employment	292,496	324,482	322,080	289,862	258,049	237,799
0080	Nonfarm employment	19,423,370	19,335,893	19,458,876	19,506,777	19,777,248	20,287,692
0090	Private employment	16,804,795	16,654,387	16,780,295	16,854,837	17,126,454	17,614,372
0100	Forestry, fishing, related activities, and other v3	237,202	234,420	231,780	231,976	235,015	237,832
0200	Mining	38,702	33,655	36,020	34,444	36,115	37,397
0300	Utilities	56,761	56,839	57,112	57,916	57,923	58,698
0400	Construction	1,075,592	1,057,207	1,089,801	1,145,615	1,215,413	1,265,021
0500	Manufacturing	1,881,924	1,733,432	1,626,594	1,608,544	1,588,387	1,584,571
0600	Wholesale trade	742,193	731,135	727,991	736,701	759,830	791,795
0700	Retail trade	1,999,197	2,009,759	2,031,866	2,030,474	2,070,705	2,102,674
0800	Transportation and warehousing	576,214	557,605	554,201	532,419	530,034	541,669
0900	Information	638,272	570,326	551,775	562,052	554,556	559,949
1000	Finance and insurance	870,761	882,148	903,503	908,579	936,857	953,401
1100	Real estate and rental and leasing	828,162	848,387	931,579	990,156	1,072,189	1,170,416
1200	Professional and technical services	1,581,771	1,548,628	1,552,005	1,576,890	1,608,745	1,689,200
1300	Management of companies and enterprises	297,246	284,150	264,114	243,053	233,225	223,615
1400	Administrative and waste services	1,237,729	1,231,988	1,249,216	1,223,907	1,215,450	1,250,004
1500	Educational services	328,969	349,525	360,437	365,886	377,865	394,367
1600	Health care and social assistance	1,550,005	1,599,900	1,652,119	1,643,296	1,641,774	1,673,733
1700	Arts, entertainment, and recreation	475,048	485,618	489,486	487,846	490,370	504,917
1800	Accommodation and food services	1,257,314	1,265,112	1,287,924	1,310,659	1,342,669	1,383,257
1900	Other services, except public administration	1,131,733	1,174,553	1,182,772	1,164,424	1,159,332	1,191,856
2000	Government and government enterprises	2,618,575	2,681,506	2,678,581	2,651,940	2,650,794	2,673,320
2001	Federal, civilian	246,226	246,221	256,417	251,326	250,717	247,686
2002	Military	229,114	230,271	235,850	233,115	223,563	221,359
2010	State and local	2,143,235	2,205,014	2,186,314	2,167,499	2,176,514	2,204,275
2011	State government	467,196	478,323	478,775	471,827	466,234	478,871
2012	Local government	1,676,039	1,726,691	1,707,539	1,695,672	1,710,280	1,725,404

Average U.S. After-Tax Household Income by Percentile (2005 Dollars) 1979 - 2005



GDP, Debt, Outlays and Receipts 1975-2008

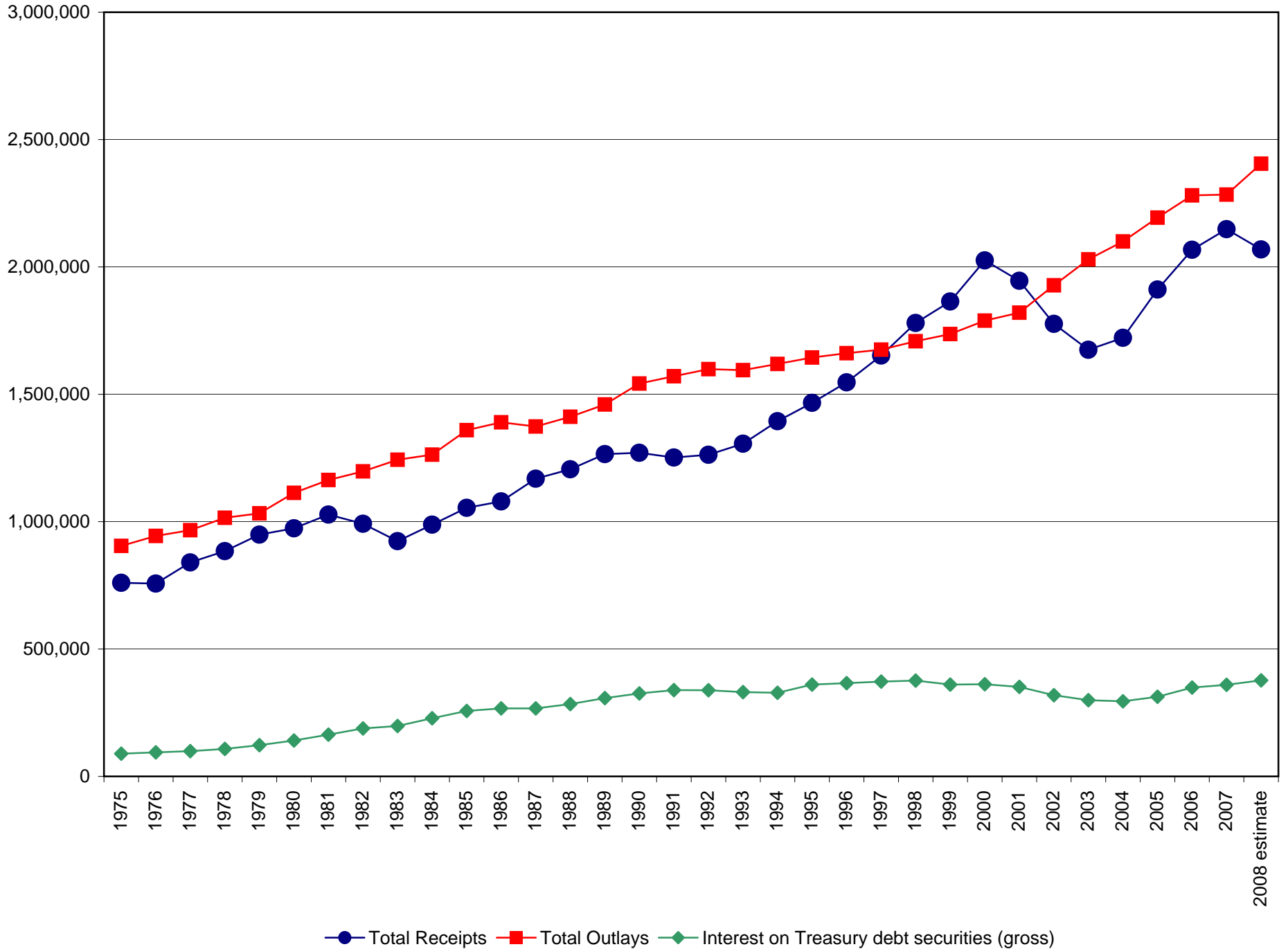
(in billions of dollars - chained 2000 dollars)



Receipts, Outlays, Total Surplus or Deficit, and Interest

1975-2008

(in billions of dollars - chained 2000 dollars)



Realities of Government/Public Safety Technology Uses

(Information Technology is not an expenditure, it is an investment that enables informed decisions by citizens and government officials alike!)

Public Health

GIS tracking of disease outbreaks (early warning)

Analysis of vital statistics to better understand trends

Education

Data inputs to track students, not just schools

Education progress and school performance

Public Safety

Identifying households with risk - 65+, disabled persons, etc.

911 call mapping and computer aided dispatch

Citizen on-line reporting of crimes, hazards, downed signs, potholes, etc.

Crime

GIS tracking of accidents, crimes, fires, murders, rapes, robberies, etc., and incident analysis (Cop on the Dot)

Law enforcement and courts records management

Information Sharing: Identifying firearms, suspects, stolen cars, etc.

Workforce

Dynamic workforce trends (Local Employment Data)

Occupational analysis

Connected Citizens

What, Where, When and How of Government Services

Feedback on government services