

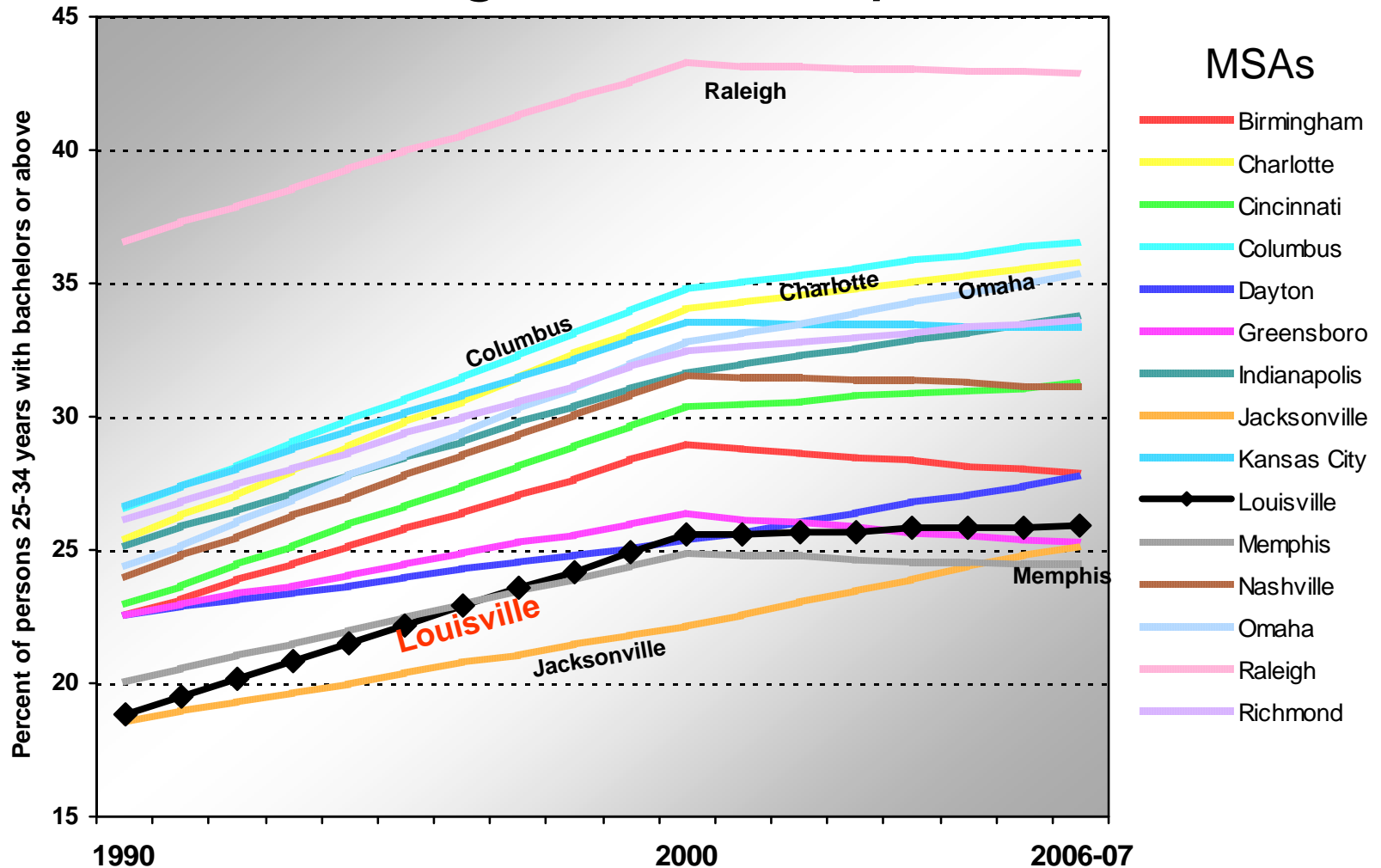
MER

Mayor's Education Roundtable

DataBook

**Michael Price
University of Louisville
July 23, 2009**

The Challenge: Growing Human Capital



MER DataBook

JCPS

Archdiocese of Louisville

Mayor's Office

Greater Louisville Inc.

Greater Louisville Project

KentuckianaWorks

MetroVersity

Bellarmino University

IU Southeast

Ivy Tech Sellersburg

JCTC

Spalding University

U of L

MER DataBook

- **Alignment & College Readiness**
- **Affordability**
- **Value of Education**
- **Career Pathways**

Alignment & College Readiness

- **Need for remediation**
- **ACT performance**
- **Retention rates**
- **Graduation rates**
- **Degree and certificate production**

Affordability

- **Sticker price**
- **Cohort default rates**
- **Student loan debt**
- **Students receiving aid**

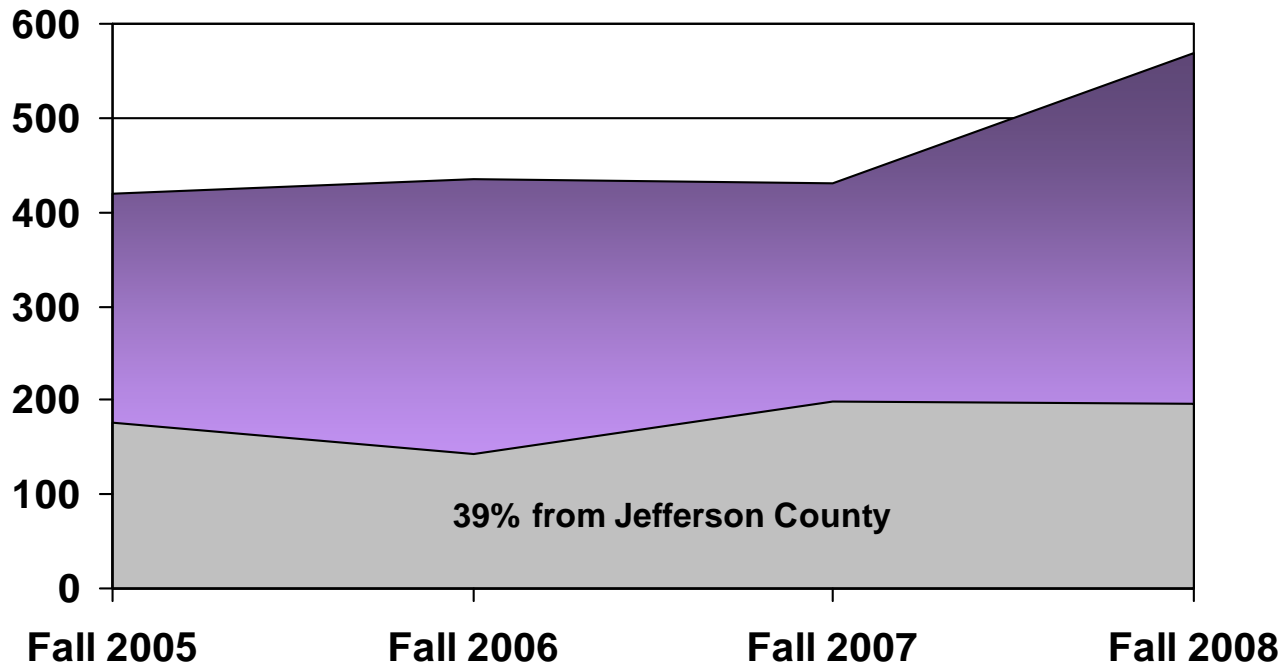
Value of education

- **2020 degree goals**
- **First-generation students**
- **Student/counselor ratios (secondary)**
- **GEDs enrolling in college**
- **Attitudinal survey**

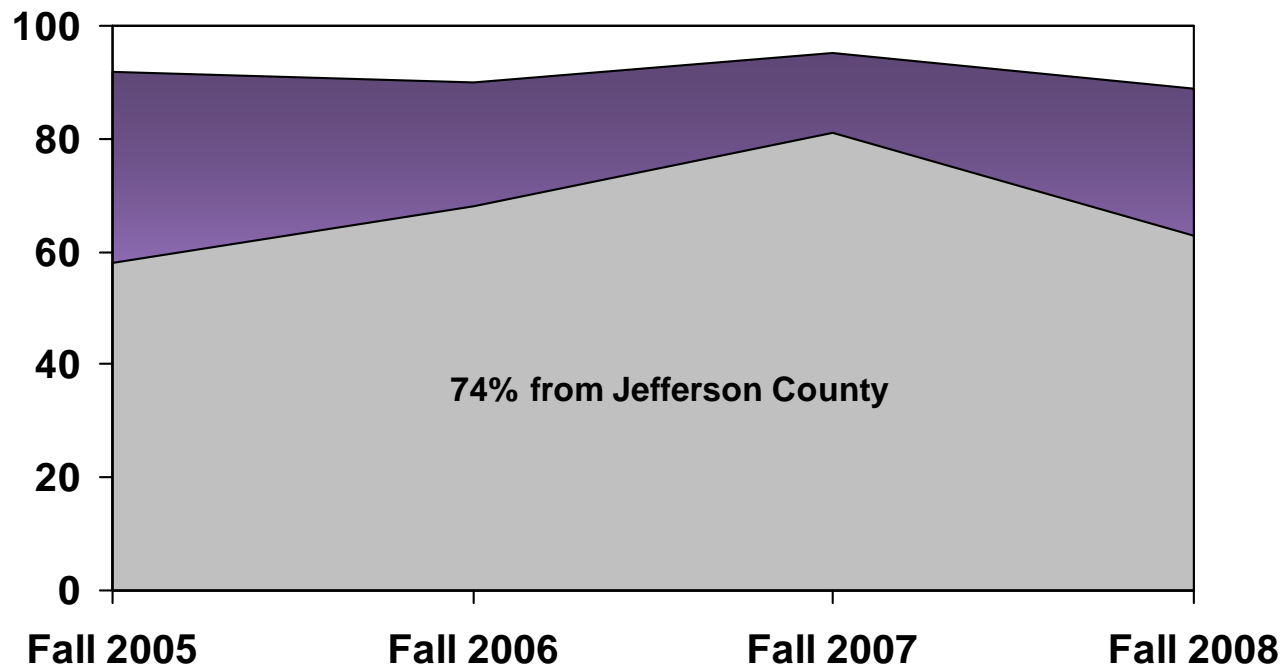
Career pathways

- **Enrollment trends**
- **Students in transfer frameworks**
- **Transfers from 2-year to 4-year college**
- **Undecided majors**

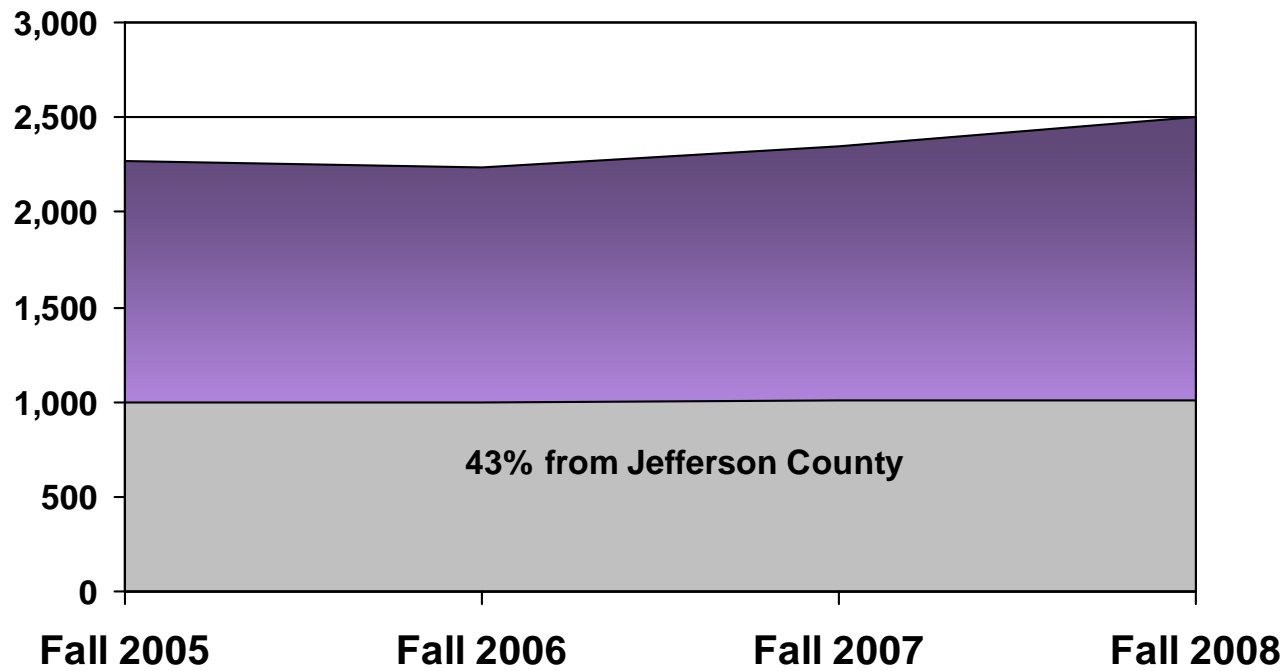
Bellarmino Freshman Enrollment



Spalding Freshman Erollment



U of L Freshman Enrollment



Prime Feeder High Schools

Incoming Freshman Fall 2005 – Fall 2008

Bellarmino

1. Assumption (84)
2. Trinity (66)
3. St. X (61)
4. Sacred Heart (43)
5. Presentation (41)
6. Male (40)

11. Butler (25)

JCTC

1. Butler (275)
2. Pleasure Ridge (225)
3. Eastern (207)
4. Male (189)
5. Seneca (188)
6. Southern (174)

Spalding

1. Butler (25)
2. Male (17)
3. Pleasure Ridge (14)
3. Eastern (14)
3. Atherton (14)
6. Central (12)

U of L

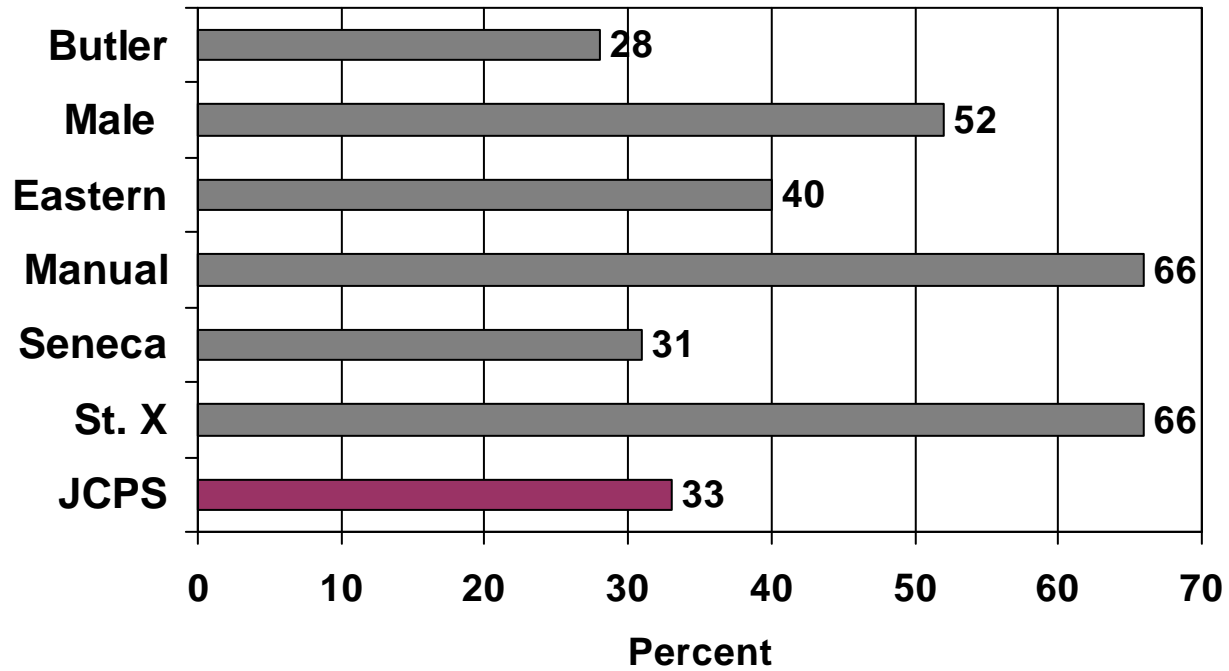
1. Dupont Manual (393)
2. Male (353)
3. Butler (295)
4. St. X (285)
5. Eastern (264)
6. Trinity (257)

TOTAL

1. Butler (620)
2. Male (599)
3. Eastern (523)
4. Dupont Manual (500)
5. Seneca (456)
6. St. X (433)

College Readiness

Students scoring 22 or above on ACT Math



(SY 2005 – SY 2008)

What makes an effective databook?

- **Commitment**
- **Responsibility**
- **Consistent**
- **Secondary data sources**
- **User groups**